

Anti-CLTCL1 Antibody (R3N04)

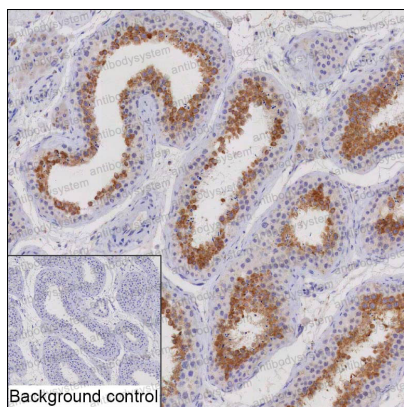
Summary

Catalog No.	RHE99701
Clone ID	R3N04
Host species	Mouse
Tested applications	IHC: 1:25-1:200
Species reactivity	Human
Form	Liquid
Storage buffer	0.01M PBS, pH 7.4, 0.05% Sodium Azide.
Concentration	1 mg/ml
Purity	>95% as determined by SDS-PAGE.
Clonality	Monoclonal
Isotype	IgG2b
Applications	IHC
Target	CLH22, CLH-22, Clathrin heavy chain 2, Clathrin heavy chain on chromosome 22, CLTCL, CLTCL1, CLTD
Purification	Protein A/G purified from cell culture supernatant.
Endotoxin level	Please contact with the lab for this information.
Accession	P53675
Stability and Storage	Use a manual defrost freezer and avoid repeated freeze-thaw cycles. Store at 4°C short term (1-2 weeks). Store at -20°C 12 months. Store at -80°C long term.

Note

For research use only.

Data Image



Immunohistochemical

IHC-P analysis of testis tissue by CLTCL1 antibody (RHE99701). IHC-P was performed using sections of the formalin-fixed paraffin-embedded testis tissue; Result: Cells in seminiferous ducts are positively stained at the cytoplasm.