

Anti-ACLY Antibody (R3N03)

Summary

Catalog No.	RHE98003
Clone ID	R3N03
Host species	Mouse
Tested applications	ELISA: 1:10000, FCM: 1:200-1:400, IF: 1:50-1:500, IHC: 1:100-1:500, WB: 1:500-1:2000
Species reactivity	Human, Mouse, Rat, Rabbit, Monkey
Form	Liquid
Storage buffer	0.01M PBS, pH 7.4, 0.05% Sodium Azide.
Concentration	1 mg/ml
Purity	>95% as determined by SDS-PAGE.
Clonality	Monoclonal
Isotype	IgG1
Applications	ELISA, FCM, IF, IHC, WB
Target	Citrate cleavage enzyme, ACLY, ATP-citrate synthase, ATP-citrate (pro-S)-lyase, ACL
Purification	Protein A/G purified from cell culture supernatant.
Endotoxin level	Please contact with the lab for this information.
Accession	P53396

Stability and Storage

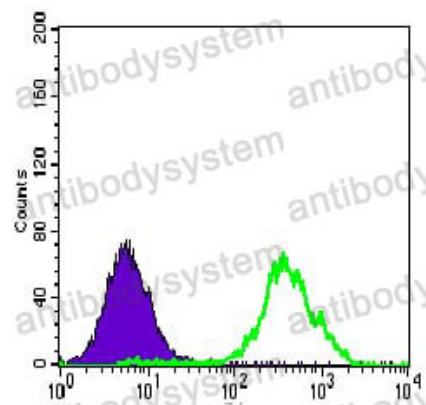
Use a manual defrost freezer and avoid repeated freeze-thaw cycles.

Store at 4°C short term (1-2 weeks). Store at -20°C 12 months. Store at -80°C long term.

Note

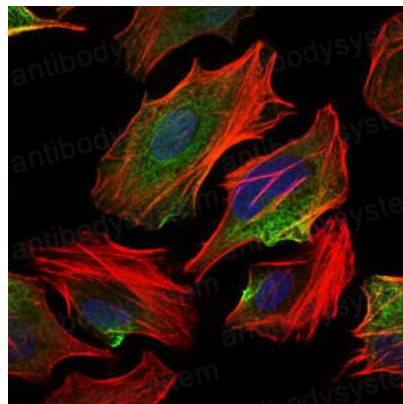
For research use only.

Data Image



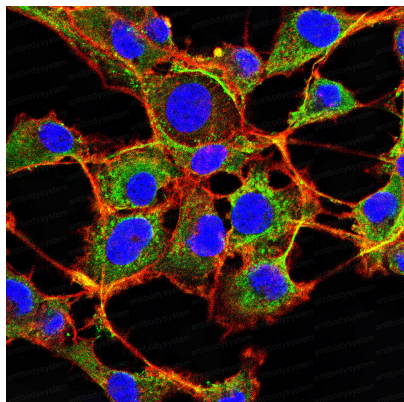
Flow Cytometry

Flow cytometric analysis of HeLa cells using ACLY mouse mAb (green) and negative control (purple).



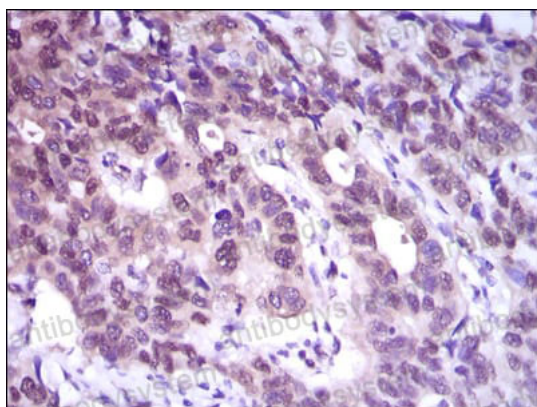
Immunofluorescence

Immunofluorescence analysis of HeLa cells using ACLY mouse mAb (green). Blue: DRAQ5 fluorescent DNA dye. Red: Actin filament labeled with Alexa Fluor-555 phalloidin.



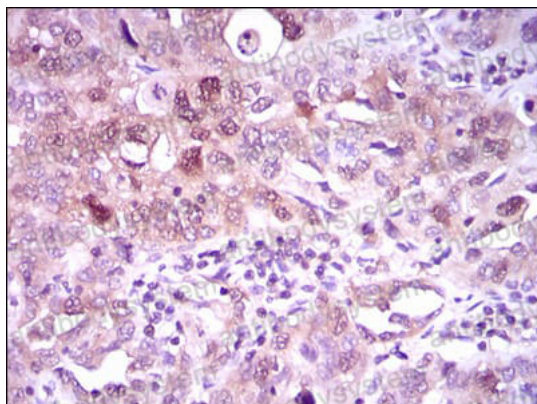
Immunofluorescence

Immunofluorescence analysis of NIH/3T3 cells using ACLY mouse mAb (green). Blue: DAPI fluorescent DNA dye. Red: Actin filament labeled with Alexa Fluor-555 phalloidin.



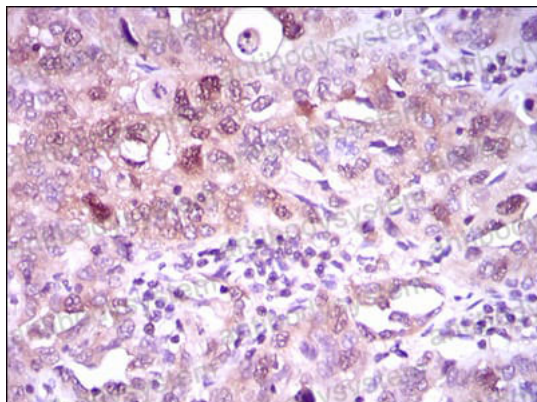
Immunohistochemical

Immunohistochemical analysis of paraffin-embedded human esophageal cancer tissue using ACLY mouse mAb with DAB staining.



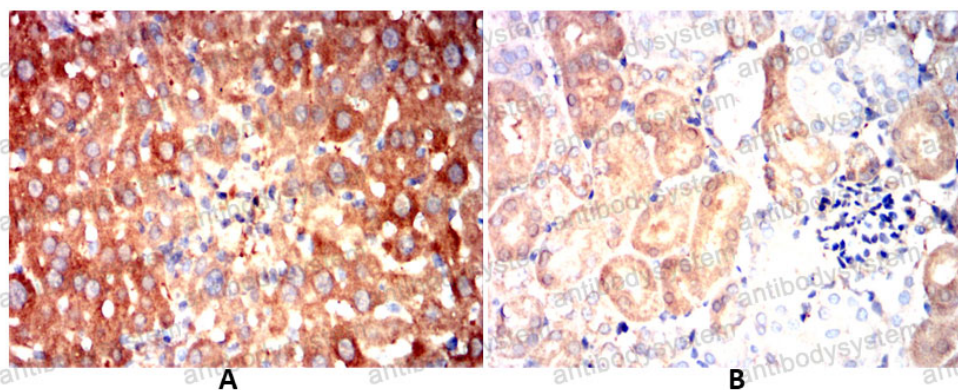
Immunohistochemical

Immunohistochemical analysis of paraffin-embedded human endometrial cancer tissue using ACLY mouse mAb with DAB staining.



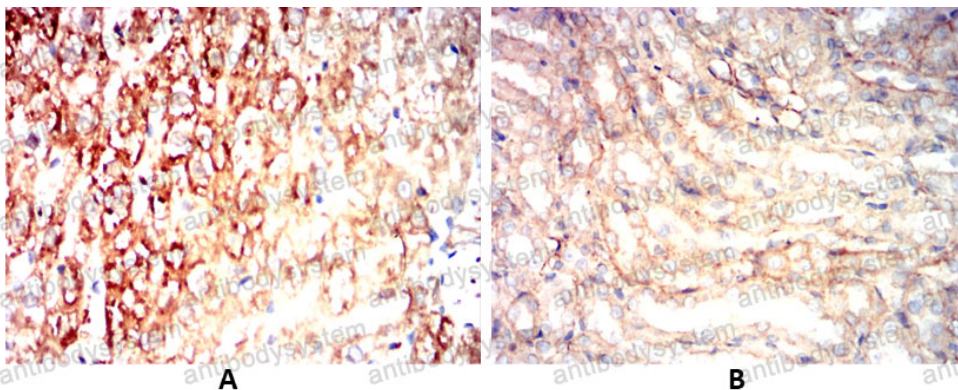
Immunohistochemical

Immunohistochemical analysis of paraffin-embedded human endometrial cancer tissue using ACLY mouse mAb with DAB staining.



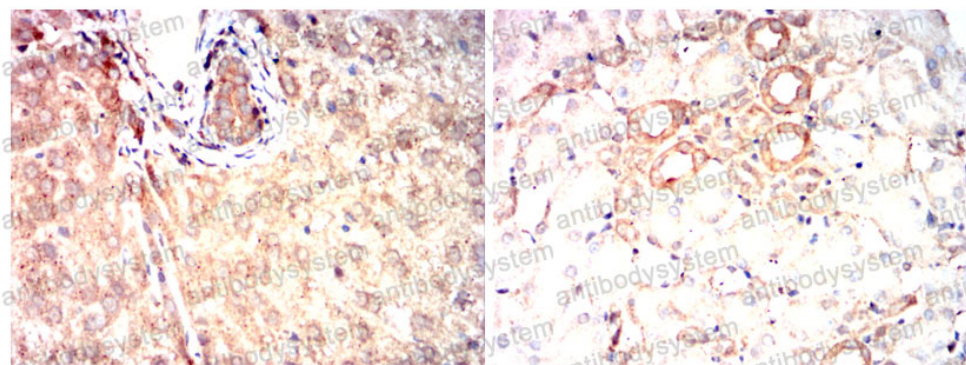
Immunohistochemical

Immunohistochemical analysis of paraffin-embedded Mouse liver(A) Mouse kidney(B) using ACLY mouse mAb with DAB staining.



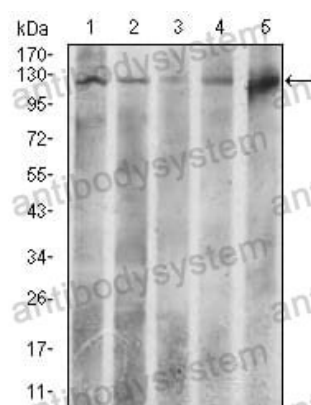
Immunohistochemical

Immunohistochemical analysis of paraffin-embedded Rat liver(A) Rat kidney(B) using ACLY mouse mAb with DAB staining.



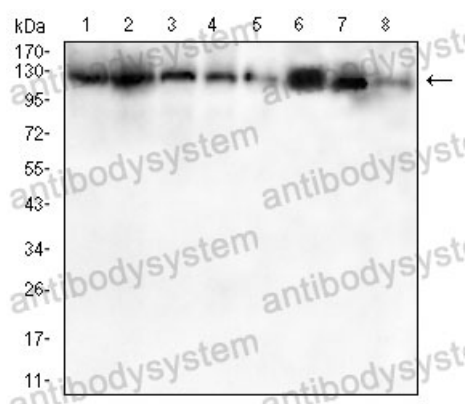
Immunohistochemical analysis of paraffin-embedded Rabbit liver(A) Rabbit kidney(B) using ACLY mouse mAb with DAB staining.

Immunohistochemical



Western blot analysis using ACLY mouse antibody against HeLa (1), NIH3T3 (2), C6 (3), COS (4) and Raji (5) cell lysate.

Western blot



Western blot analysis using ACLY mouse antibody against PC-12 (1) Raw264.7 (2) NIH/3T3 (3) NRK (4) C6 (5) CHO3D10 (7) cell lysate (8).

Western blot