

Anti-PLK1 Antibody (R3N02)

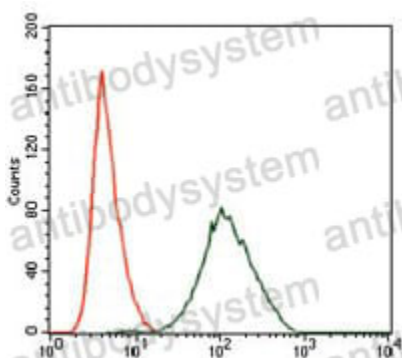
Summary

Catalog No.	RHE97404
Clone ID	R3N02
Host species	Mouse
Tested applications	ELISA: 1:10000, FCM: 1:200-1:400, IHC: 1:100-1:500, WB: 1:500-1:2000
Species reactivity	Human, Mouse, Rat, Monkey
Form	Liquid
Storage buffer	0.01M PBS, pH 7.4, 0.05% Sodium Azide.
Concentration	1 mg/ml
Purity	>95% as determined by SDS-PAGE.
Clonality	Monoclonal
Isotype	IgG1
Applications	ELISA, FCM, IHC, WB
Target	Serine/threonine-protein kinase 13, PLK-1, PLK1, PLK, STPK13, Serine/threonine-protein kinase PLK1, Polo-like kinase 1
Purification	Protein A/G purified from cell culture supernatant.
Endotoxin level	Please contact with the lab for this information.
Accession	P53350
Stability and Storage	Use a manual defrost freezer and avoid repeated freeze-thaw cycles. Store at 4°C short term (1-2 weeks). Store at -20°C 12 months. Store at -80°C long term.

Note

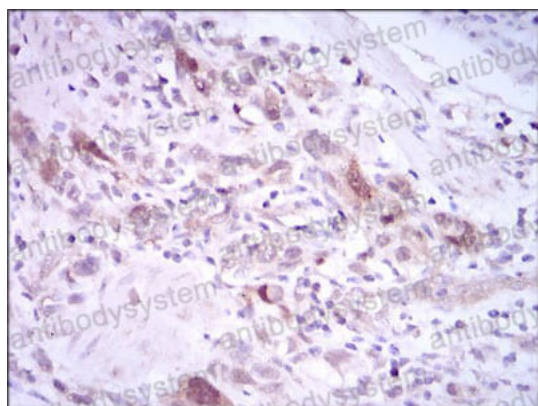
For research use only.

Data Image



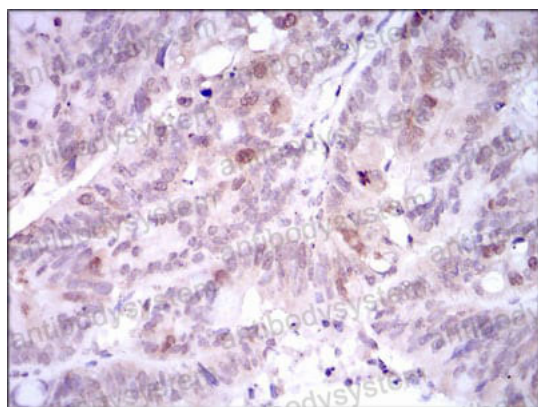
Flow Cytometry

Flow cytometric analysis of NIH3T3 cells using PLK1 mouse mAb (green) and negative control (red).



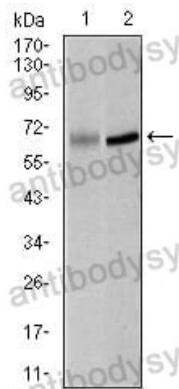
Immunohistochemical

Immunohistochemical analysis of paraffin-embedded human stomach cancer tissues using PLK1 mouse mAb with DAB staining.



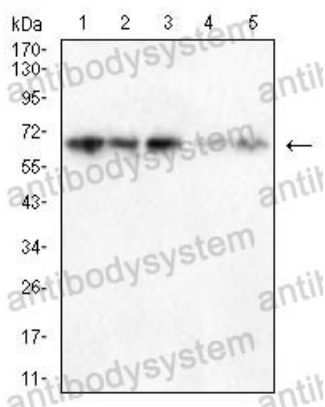
Immunohistochemical

Immunohistochemical analysis of paraffin-embedded human rectum cancer tissues using PLK1 mouse mAb with DAB staining.



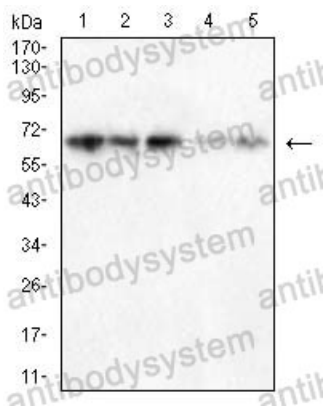
Western blot

Western blot analysis using PLK1 mouse mAb against K562 (1) and Raji (2) cell lysate.



Western blot

Western blot analysis using PLK1 mouse mAb against NIH/3T3(1)NRK(2)C6(3)COS-7(4)CHO3D10(5) cell lysate.



Western blot

Western blot analysis using PLK1 mouse mAb against NIH/3T3(1)NRK(2)C6(3)COS-7(4)CHO3D10(5) cell lysate.