

Anti-Eg5/KIF11 Antibody (R3M90)

Summary

Catalog No.	RHE93204
Clone ID	R3M90
Host species	Mouse
Tested applications	IF: 1:50-1:200, IP: 1:20, WB: 1:500-1:1000
Species reactivity	Human
Form	Liquid
Storage buffer	0.01M PBS, pH 7.4, 0.5% BSA, 0.05% Sodium Azide and 50% Glycerol.
Concentration	1 mg/ml
Purity	>95% as determined by SDS-PAGE.
Clonality	Monoclonal
Isotype	IgG1
Applications	IF, IP, WB
Target	EG5, TR-interacting protein 5, Kinesin-like protein KIF11, TRIP-5, KNSL1, Kinesin-like spindle protein HKSP, TRIP5, Kinesin-related motor protein Eg5, Thyroid receptor-interacting protein 5, KIF11, Kinesin-like protein 1
Purification	Protein A/G purified from cell culture supernatant.
Endotoxin level	Please contact with the lab for this information.
Accession	P52732

Stability and Storage

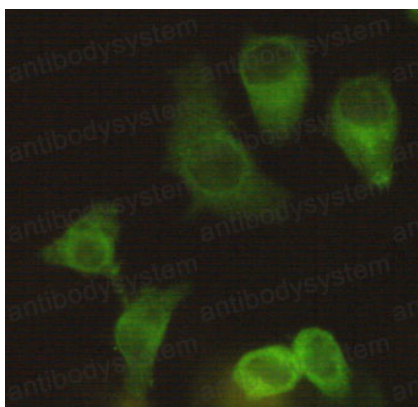
Use a manual defrost freezer and avoid repeated freeze-thaw cycles.

Store at 4°C short term (1-2 weeks). Store at -20°C 12 months. Store at -80°C long term.

Note

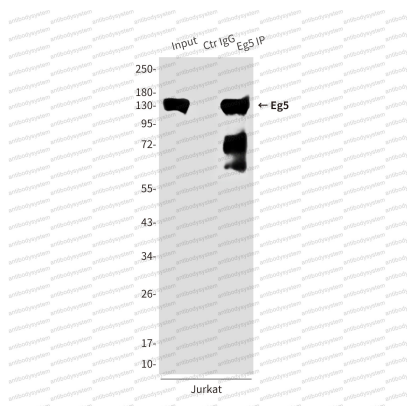
For research use only.

Data Image



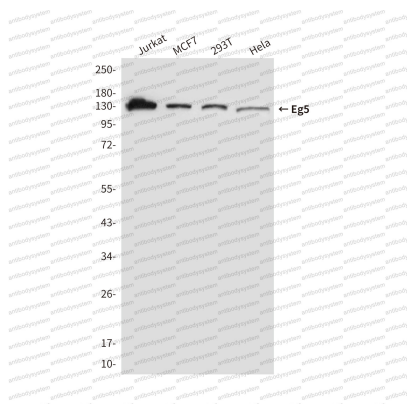
Immunofluorescence

Immunocytochemistry analysis of Eg5 in HeLa using Eg5 antibody.



Immunoprecipitation

Immunoprecipitation analysis of Eg5 in Jurkat lysates using Eg5 antibody.



Western blot

Western blot analysis of Eg5 in MCF-7, 293T, Jurkat and HeLa lysates using Eg5 antibody.