

Anti-KIF11 Antibody (R3M89)

Summary

Catalog No.	RHE93203
Clone ID	R3M89
Host species	Mouse
Tested applications	ELISA: 1:10000, FCM: 1:200-1:400, IHC: 1:200-1:1000, WB: 1:500-1:2000
Species reactivity	Human
Form	Liquid
Storage buffer	0.01M PBS, pH 7.4, 0.05% Sodium Azide.
Concentration	1 mg/ml
Purity	>95% as determined by SDS-PAGE.
Clonality	Monoclonal
Isotype	IgG1
Applications	ELISA, FCM, IHC, WB
Target	EG5, TR-interacting protein 5, Kinesin-like protein KIF11, TRIP-5, KNSL1, Kinesin-like spindle protein HKSP, TRIP5, Kinesin-related motor protein Eg5, Thyroid receptor-interacting protein 5, KIF11, Kinesin-like protein 1
Purification	Protein A/G purified from cell culture supernatant.
Endotoxin level	Please contact with the lab for this information.
Accession	P52732

Stability and Storage

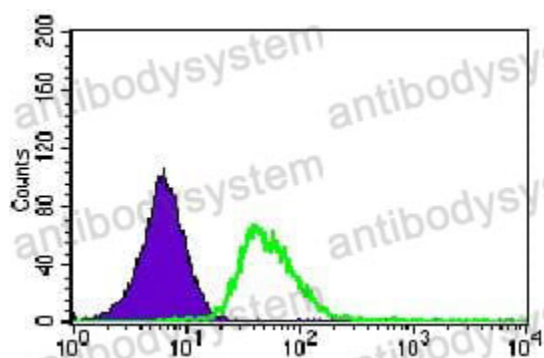
Use a manual defrost freezer and avoid repeated freeze-thaw cycles.

Store at 4°C short term (1-2 weeks). Store at -20°C 12 months. Store at -80°C long term.

Note

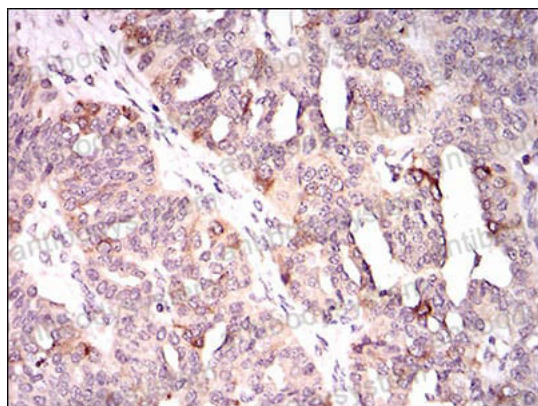
For research use only.

Data Image



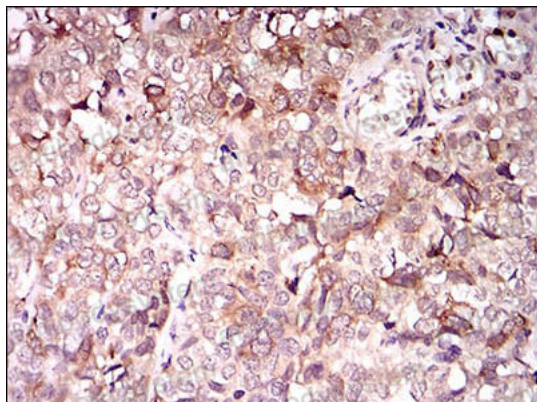
Flow Cytometry

Flow cytometric analysis of HeLa cells using KIF11 mouse mAb (green) and negative control (purple).



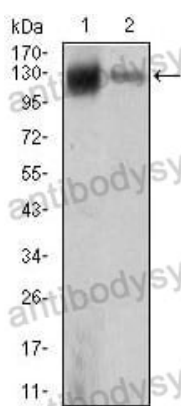
Immunohistochemical

Immunohistochemical analysis of paraffin-embedded human ovarian cancer tissues using KIF11 mouse mAb with DAB staining.



Immunohistochemical

Immunohistochemical analysis of paraffin-embedded human bladder cancer tissues using KIF11 mouse mAb with DAB staining.



Western blot

Western blot analysis using KIF11 mouse mAb against MCF-7 (1) and HeLa (2) cell lysate.