

Anti-MSH6 Antibody (R3M88)

Summary

Catalog No.	RHE93108
Clone ID	R3M88
Host species	Mouse
Tested applications	ELISA: 1:10000, FCM: 1:200-1:400, IF: 1:200-1:1000, IHC: 1:200-1:1000, WB: 1:500-1:2000
Species reactivity	Human
Form	Liquid
Storage buffer	0.01M PBS, pH 7.4, 0.05% Sodium Azide.
Concentration	1 mg/ml
Purity	>95% as determined by SDS-PAGE.
Clonality	Monoclonal
Isotype	IgG2b
Applications	ELISA, FCM, IF, IHC, WB
Target	DNA mismatch repair protein Msh6, MutS protein homolog 6, MSH6, GTBP, hMSH6, GTMBP, G/T mismatch-binding protein, MutS-alpha 160 kDa subunit, p160
Purification	Protein A/G purified from cell culture supernatant.
Endotoxin level	Please contact with the lab for this information.
Accession	P52701

Stability and Storage

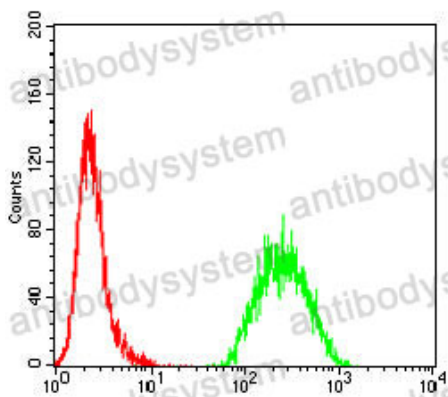
Use a manual defrost freezer and avoid repeated freeze-thaw cycles.

Store at 4°C short term (1-2 weeks). Store at -20°C 12 months. Store at -80°C long term.

Note

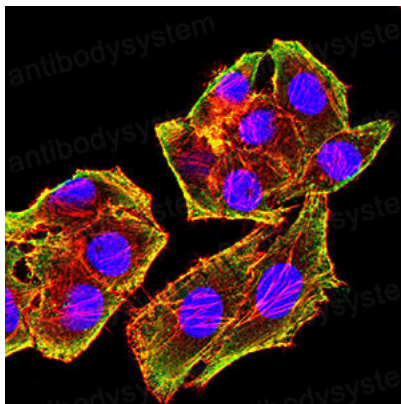
For research use only.

Data Image



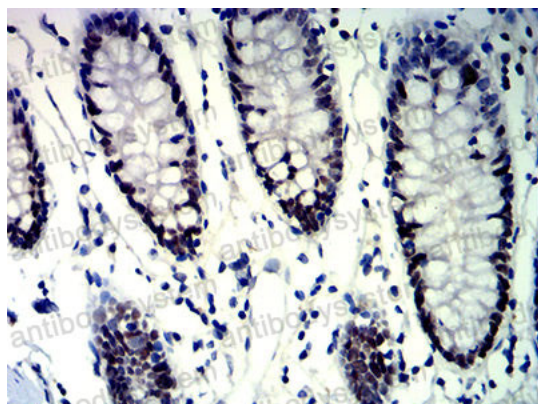
Flow Cytometry

Flow cytometric analysis of Hela cells using MSH6 mouse mAb (green) and negative control (red).



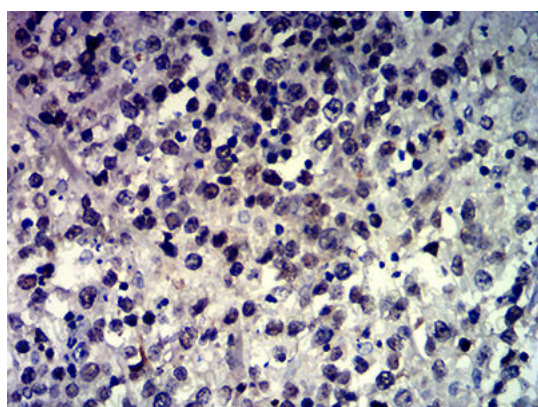
Immunofluorescence

Immunofluorescence analysis of Hela cells using MSH6 mouse mAb (green). Blue: DRAQ5 fluorescent DNA dye. Red: Actin filaments have been labeled with Alexa Fluor- 555 phalloidin.



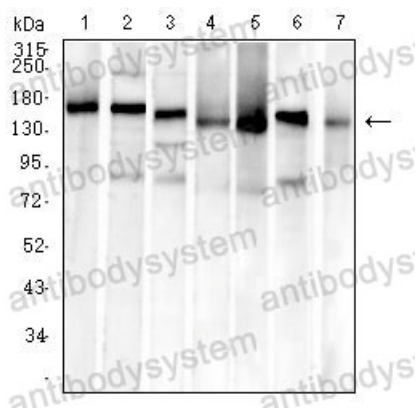
Immunohistochemical

Immunohistochemical analysis of paraffin-embedded human colon tissues using MSH6 mouse mAb with DAB staining.



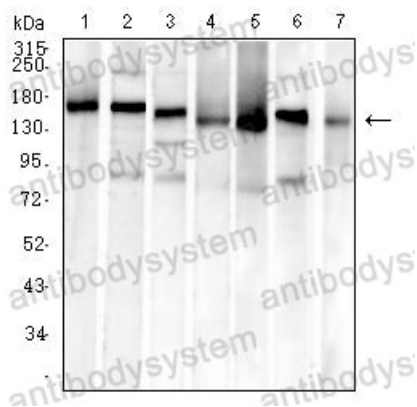
Immunohistochemical

Immunohistochemical analysis of paraffin-embedded human brain tumor tissues using MSH6 mouse mAb with DAB staining.



Western blot

Western blot analysis using MSH6 mouse mAb against SH-SY5Y (1), Hela (2), PC-3 (3), HCT116 (4), HEK293 (5), A549 (6), and HepG2 (7) cell lysate.



Western blot

Western blot analysis using MSH6 mouse mAb against SH-SY5Y (1), Hela (2), PC-3 (3), HCT116 (4), HEK293 (5), A549 (6), and HepG2 (7) cell lysate.