

Anti-MSH6 Antibody (R3M87)

Summary

| | |
|----------------------------|--|
| Catalog No. | RHE93107 |
| Clone ID | R3M87 |
| Host species | Mouse |
| Tested applications | ELISA: 1:10000, FCM: 1:200-1:400, IHC: 1:200-1:1000, WB: 1:500-1:2000 |
| Species reactivity | Human |
| Form | Liquid |
| Storage buffer | 0.01M PBS, pH 7.4, 0.05% Sodium Azide. |
| Concentration | 1 mg/ml |
| Purity | >95% as determined by SDS-PAGE. |
| Clonality | Monoclonal |
| Isotype | IgG2b |
| Applications | ELISA, FCM, IHC, WB |
| Target | DNA mismatch repair protein Msh6, MutS protein homolog 6, MSH6, GTBP, hMSH6, GTMBP, G/T mismatch-binding protein, MutS-alpha 160 kDa subunit, p160 |
| Purification | Protein A/G purified from cell culture supernatant. |
| Endotoxin level | Please contact with the lab for this information. |
| Accession | P52701 |

Stability and Storage

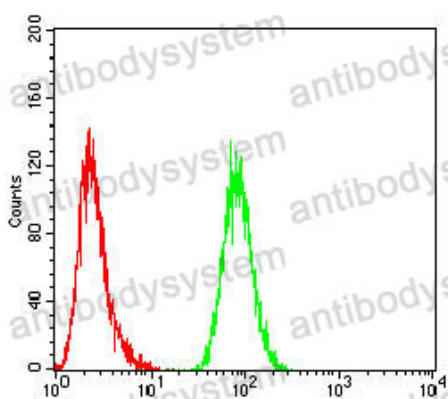
Use a manual defrost freezer and avoid repeated freeze-thaw cycles.

Store at 4°C short term (1-2 weeks). Store at -20°C 12 months. Store at -80°C long term.

Note

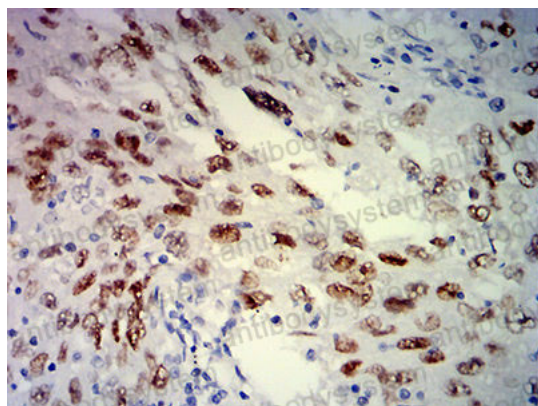
For research use only.

Data Image



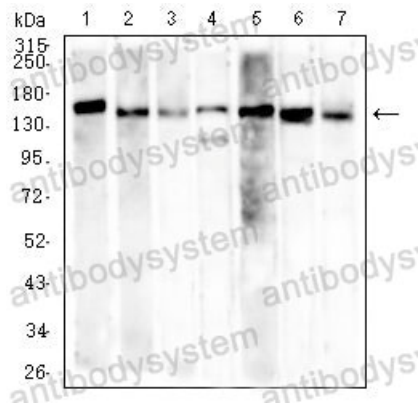
Flow Cytometry

Flow cytometric analysis of Hela cells using MSH6 mouse mAb (green) and negative control (red).



Immunohistochemical

Immunohistochemical analysis of paraffin-embedded human lung cancer tissues using MSH6 mouse mAb with DAB staining.



Western blot

Western blot analysis using MSH6 mouse mAb against SH-SY5Y (1), K562 (2), Hela (3), PC-3 (4), HCT116 (5), HEK293 (6), and A549 (7) cell lysate.