

Anti-MSH6 Antibody (R3M86)

Summary

Catalog No.	RHE93106
Clone ID	R3M86
Host species	Mouse
Tested applications	ELISA: 1:10000, FCM: 1:200-1:400, WB: 1:500-1:2000
Species reactivity	Human, Mouse, Monkey
Form	Liquid
Storage buffer	0.01M PBS, pH 7.4, 0.05% Sodium Azide.
Concentration	1 mg/ml
Purity	>95% as determined by SDS-PAGE.
Clonality	Monoclonal
Isotype	IgG1
Applications	ELISA, FCM, WB
Target	DNA mismatch repair protein Msh6, MutS protein homolog 6, MSH6, GTBP, hMSH6, GTMBP, G/T mismatch-binding protein, MutS-alpha 160 kDa subunit, p160
Purification	Protein A/G purified from cell culture supernatant.
Endotoxin level	Please contact with the lab for this information.
Accession	P52701

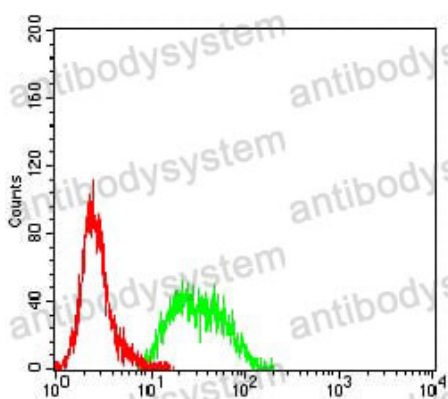
Stability and Storage

Use a manual defrost freezer and avoid repeated freeze-thaw cycles.

Store at 4°C short term (1-2 weeks). Store at -20°C 12 months. Store at -80°C long term.

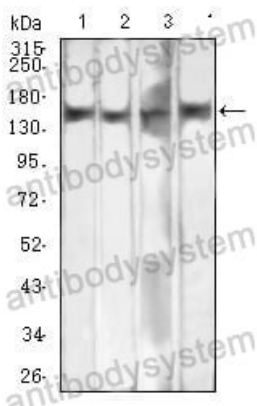
Note

For research use only.

Data Image

Flow Cytometry

Flow cytometric analysis of Hela cells using MSH6 mouse mAb (green) and negative control (red).



Western blot

Western blot analysis using MSH6 mouse mAb against MIH/3T3 (1), A431 (2), K562 (3), and COS7 (4) cell lysate.