

Anti-MAP2K6 Antibody (R3M80)

Summary

Catalog No.	RHE92203
Clone ID	R3M80
Host species	Mouse
Tested applications	ELISA: 1:10000, IHC: 1:200-1:1000, WB: 1:500-1:2000
Species reactivity	Human, Mouse
Form	Liquid
Storage buffer	0.01M PBS, pH 7.4, 0.05% Sodium Azide.
Concentration	1 mg/ml
Purity	>95% as determined by SDS-PAGE.
Clonality	Monoclonal
Isotype	IgG1
Applications	ELISA, IHC, WB
Target	MEK6, Dual specificity mitogen-activated protein kinase kinase 6, SAPKK-3, PRKMK6, MAPK/ERK kinase 6, Stress-activated protein kinase kinase 3, MAP2K6, SKK3, MKK6, MAPKK 6, SAPKK3, MEK 6, MAP kinase kinase 6, SAPK kinase 3
Purification	Protein A/G purified from cell culture supernatant.
Endotoxin level	Please contact with the lab for this information.
Accession	P52564

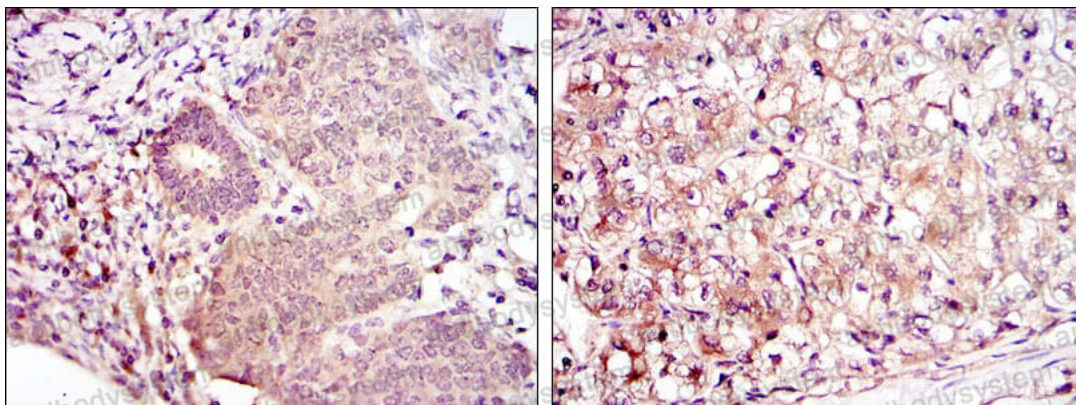
Stability and Storage

Use a manual defrost freezer and avoid repeated freeze-thaw cycles.

Store at 4°C short term (1-2 weeks). Store at -20°C 12 months. Store at -80°C long term.

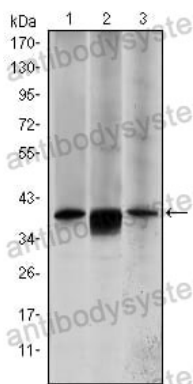
Note

For research use only.

Data Image

Immunohistochemical analysis of paraffin-embedded human ovarian cancer (left) and kidney cancer (right) using MAP2K6 mouse mAb with DAB staining.

Immunohistochemical



Western blot analysis using MAP2K6 mouse mAb against HepG2 (1), MCF-7 (2) and NIH/3T3 (3) cell lysate.

Western blot