

Anti-MAP2K6 Antibody (R3M79)

Summary

Catalog No.	RHE92202
Clone ID	R3M79
Host species	Mouse
Tested applications	ELISA: 1:10000, FCM: 1:200-1:400, IF: 1:200-1:1000, WB: 1:500-1:2000
Species reactivity	Human, Mouse
Form	Liquid
Storage buffer	0.01M PBS, pH 7.4, 0.05% Sodium Azide.
Concentration	1 mg/ml
Purity	>95% as determined by SDS-PAGE.
Clonality	Monoclonal
Isotype	IgG1
Applications	ELISA, FCM, IF, WB
Target	MEK6, Dual specificity mitogen-activated protein kinase kinase 6, SAPKK-3, PRKMK6, MAPK/ERK kinase 6, Stress-activated protein kinase kinase 3, MAP2K6, SKK3, MKK6, MAPKK 6, SAPKK3, MEK 6, MAP kinase kinase 6, SAPK kinase 3
Purification	Protein A/G purified from cell culture supernatant.
Endotoxin level	Please contact with the lab for this information.
Accession	P52564

Stability and Storage

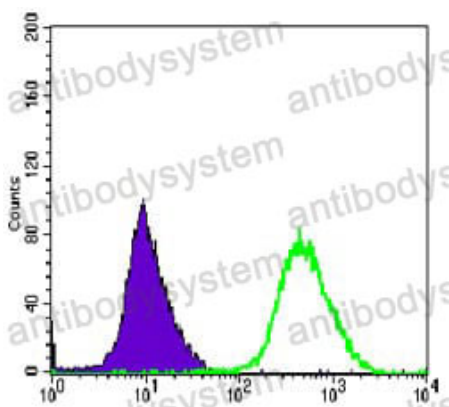
Use a manual defrost freezer and avoid repeated freeze-thaw cycles.

Store at 4°C short term (1-2 weeks). Store at -20°C 12 months. Store at -80°C long term.

Note

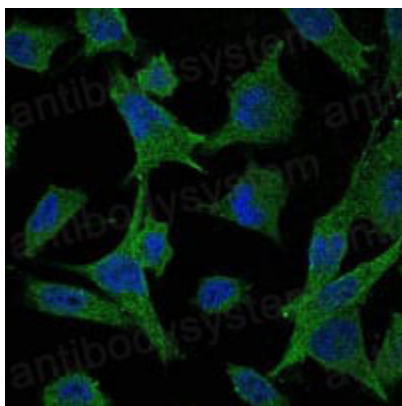
For research use only.

Data Image



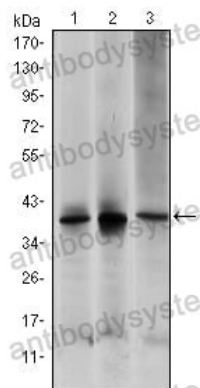
Flow Cytometry

Flow cytometric analysis of HeLa cells using MAP2K6 mouse mAb (green) and negative control (purple).



Immunofluorescence

Immunofluorescence analysis of HeLa cells using MAP2K6 mouse mAb (green). Blue: DRAQ5 fluorescent DNA dye.



Western blot

Western blot analysis using MAP2K6 mouse mAb against HepG2 (1), MCF-7 (2) and NIH/3T3 (3) cell lysate.