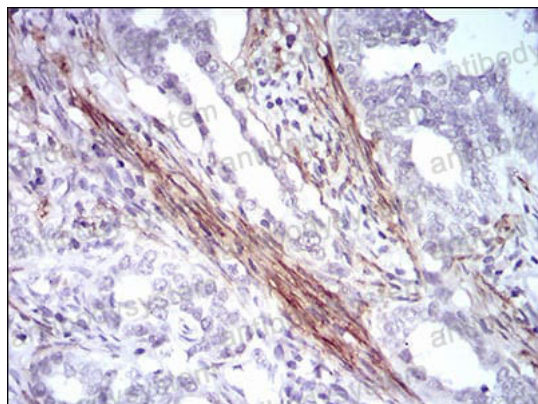


Anti-CNN1 Antibody (R3M72)

Summary

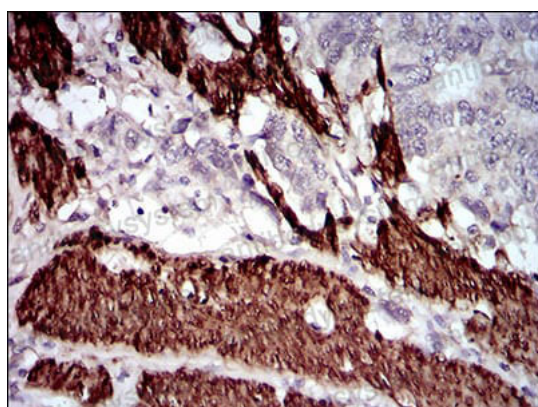
Catalog No.	RHE89901
Clone ID	R3M72
Host species	Mouse
Tested applications	ELISA: 1:10000, IHC: 1:100-1:500, WB: 1:500-1:2000
Species reactivity	Human, Mouse, Rat, Rabbit, Monkey
Form	Liquid
Storage buffer	0.01M PBS, pH 7.4, 0.05% Sodium Azide.
Concentration	1 mg/ml
Purity	>95% as determined by SDS-PAGE.
Clonality	Monoclonal
Isotype	IgG1
Applications	ELISA, IHC, WB
Target	Basic calponin, Calponin-1, CNN1, Calponin H1, smooth muscle
Purification	Protein A/G purified from cell culture supernatant.
Endotoxin level	Please contact with the lab for this information.
Accession	P51911
Stability and Storage	Use a manual defrost freezer and avoid repeated freeze-thaw cycles. Store at 4°C short term (1-2 weeks). Store at -20°C 12 months. Store at -80°C long term.
Note	For research use only.

Data Image



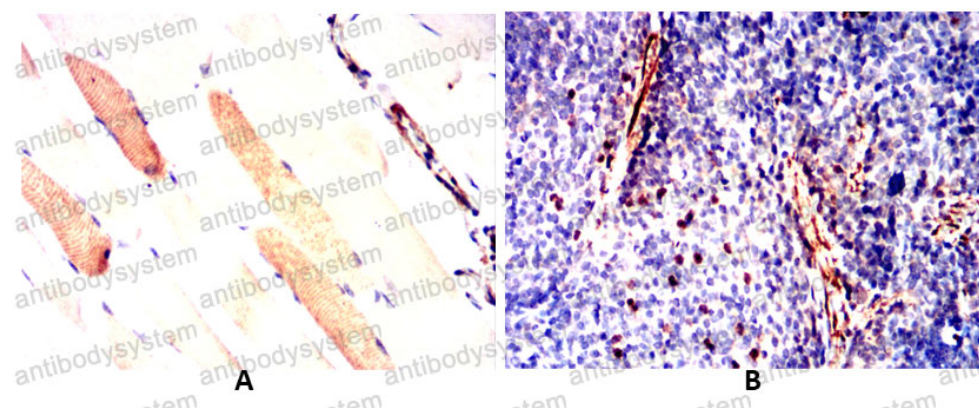
Immunohistochemical

Immunohistochemical analysis of paraffin-embedded human cervical cancer tissues using CNN1 mouse mAb with DAB staining.



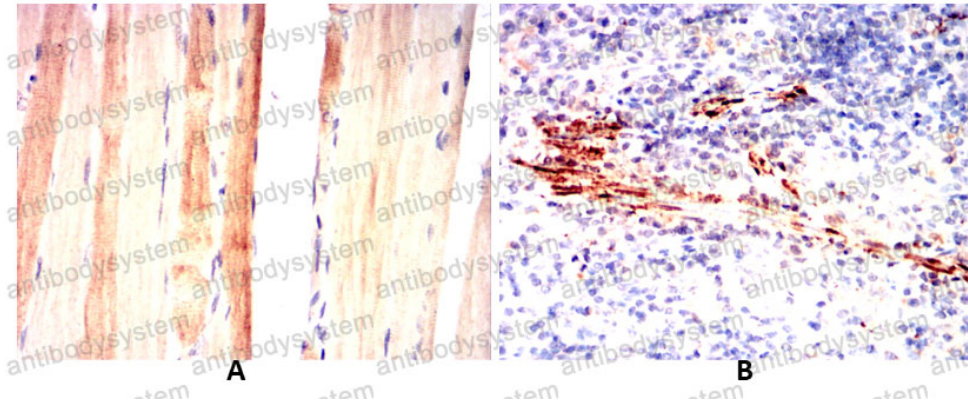
Immunohistochemical

Immunohistochemical analysis of paraffin-embedded human esophageal cancer tissues using CNN1 mouse mAb with DAB staining.



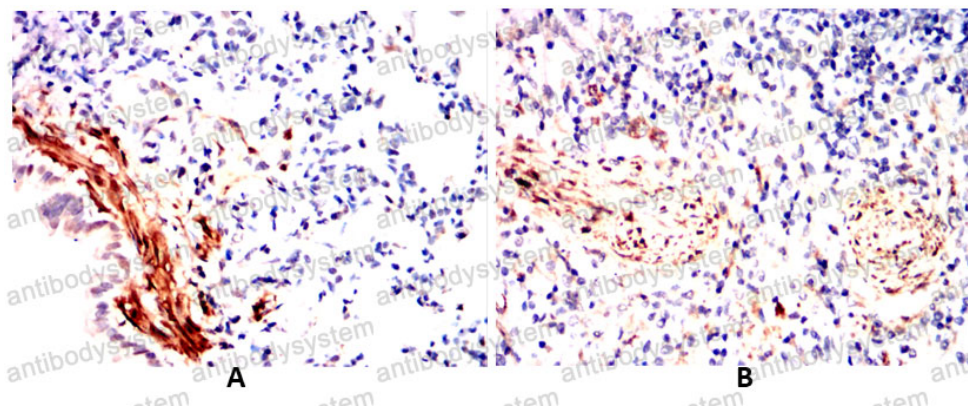
Immunohistochemical

Immunohistochemical analysis of paraffin-embedded Mouse spleen(A) Mouse muscle(B) using CNN1 mouse mAb with DAB staining.



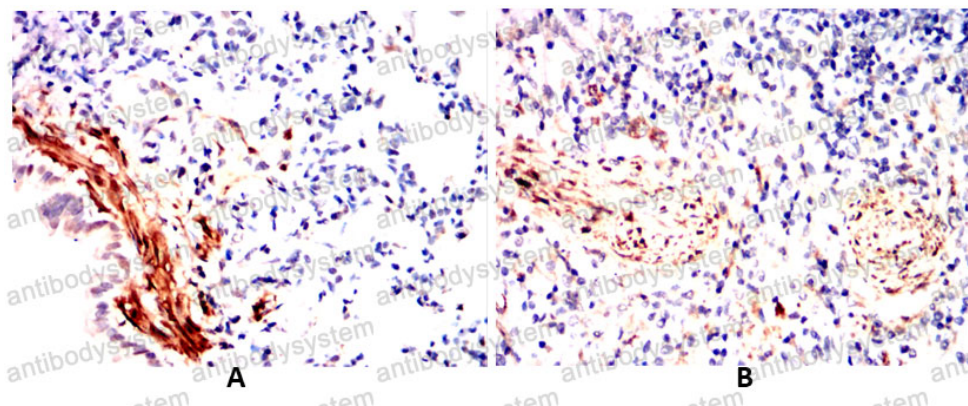
Immunohistochemical analysis of paraffin-embedded Rat spleen(A) Rat muscle(B) using CNN1 mouse mAb with DAB staining.

Immunohistochemical



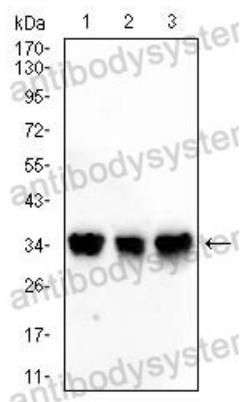
Immunohistochemical analysis of paraffin-embedded Rabbit lung using CNN1 mouse mAb with DAB staining.

Immunohistochemical



Immunohistochemical analysis of paraffin-embedded Rabbit lung using CNN1 mouse mAb with DAB staining.

Immunohistochemical



Western blot

Western blot analysis using
CNN1 mouse mAb against
C2C12(1) COS-7 (2) HELA(3) cell
lysate.