

Anti-RSK2/RPS6KA3 Antibody (R3M71)

Summary

Catalog No.	RHE88003
Clone ID	R3M71
Host species	Mouse
Tested applications	ELISA: 1:10000, FCM: 1:200-1:400, IF: 1:200-1:1000, WB: 1:500-1:2000
Species reactivity	Human
Form	Liquid
Storage buffer	0.01M PBS, pH 7.4, 0.05% Sodium Azide.
Concentration	1 mg/ml
Purity	>95% as determined by SDS-PAGE.
Clonality	Monoclonal
Isotype	IgG1
Applications	ELISA, FCM, IF, WB
Target	Insulin-stimulated protein kinase 1, MAP kinase-activated protein kinase 1b, ISPK-1, RSK2, Ribosomal S6 kinase 2, MAPKAPK-1b, ISPK1, pp90RSK2, p90RSK3, RSK-2, 90 kDa ribosomal protein S6 kinase 3, MAPKAPK1B, S6K-alpha-3, MAPKAP kinase 1b, p90-RSK 3, RPS6KA3, MAPK-activated protein kinase 1b, Ribosomal protein S6 kinase alpha-3
Purification	Protein A/G purified from cell culture supernatant.
Endotoxin level	Please contact with the lab for this information.
Accession	P51812

Stability and Storage

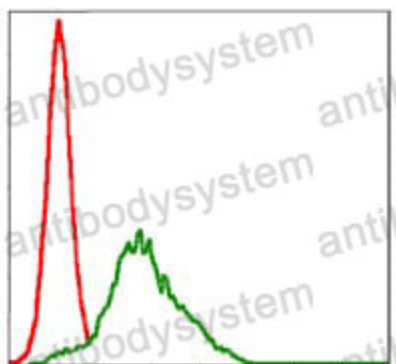
Use a manual defrost freezer and avoid repeated freeze-thaw cycles.

Store at 4°C short term (1-2 weeks). Store at -20°C 12 months. Store at -80°C long term.

Note

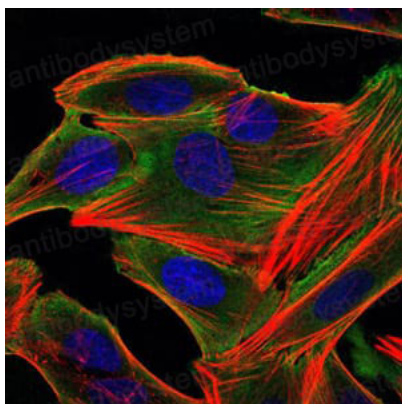
For research use only.

Data Image



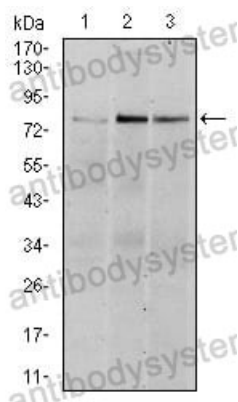
Flow Cytometry

Flow cytometric analysis of HepG2 cells using RSK2 mouse mAb (green) and negative control (red).



Immunofluorescence

Immunofluorescence analysis of HepG2 cells using RSK2 mouse mAb (green). Blue: DRAQ5 fluorescent DNA dye. Red: Actin filaments have been labeled with Alexa Fluor-555 phalloidin.



Western blot

Western blot analysis using RSK2 mouse mAb against Hela (1), MCF-7 (2), and HepG2 (3) cell lysate.