

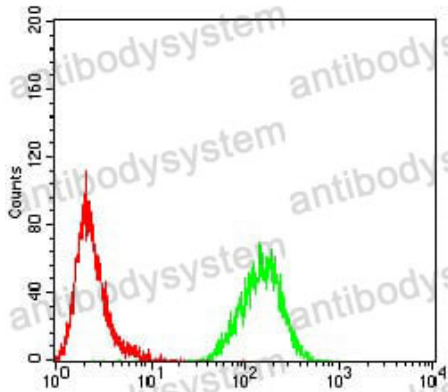
Anti-MECP2 Antibody (R3M55)

Summary

Catalog No.	RHE84004
Clone ID	R3M55
Host species	Mouse
Tested applications	ELISA: 1:10000, FCM: 1:200-1:400, IF: 1:200-1:1000, IHC: 1:200-1:1000, WB: 1:500-1:2000
Species reactivity	Human
Form	Liquid
Storage buffer	0.01M PBS, pH 7.4, 0.05% Sodium Azide.
Concentration	1 mg/ml
Purity	>95% as determined by SDS-PAGE.
Clonality	Monoclonal
Isotype	IgG1
Applications	ELISA, FCM, IF, IHC, WB
Target	MeCp2, MeCp-2 protein, Methyl-CpG-binding protein 2, MECP2
Purification	Protein A/G purified from cell culture supernatant.
Endotoxin level	Please contact with the lab for this information.
Accession	P51608
Stability and Storage	Use a manual defrost freezer and avoid repeated freeze-thaw cycles. Store at 4°C short term (1-2 weeks). Store at -20°C 12 months. Store at -80°C long term.

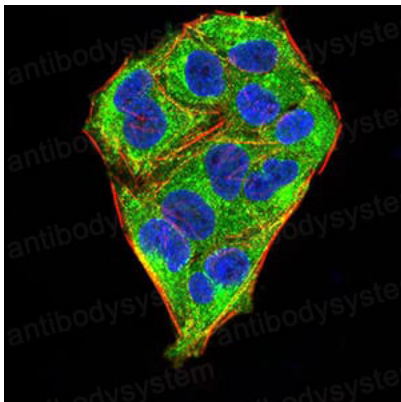
Note For research use only.

Data Image



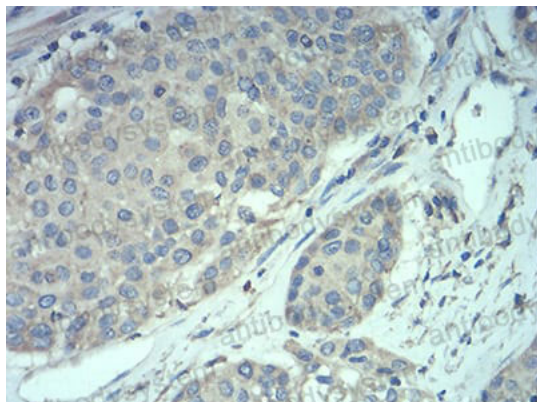
Flow Cytometry

Flow cytometric analysis of Hela cells using MECP2 mouse mAb (green) and negative control (red).



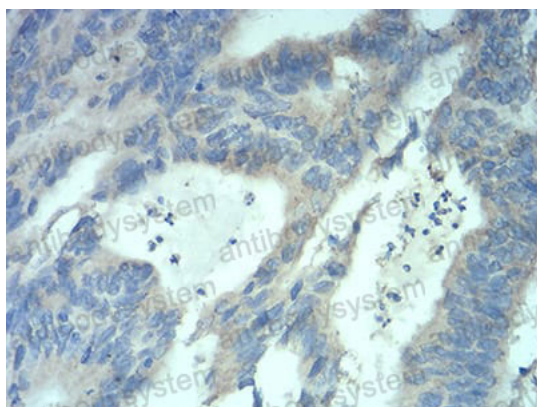
Immunofluorescence

Immunofluorescence analysis of Hela cells using MECP2 mouse mAb (green). Blue: DRAQ5 fluorescent DNA dye. Red: Actin filaments have been labeled with Alexa Fluor- 555 phalloidin.



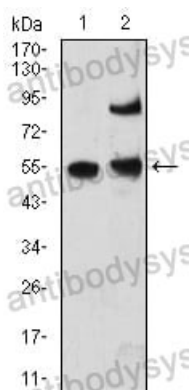
Immunohistochemical

Immunohistochemical analysis of paraffin-embedded human ovarian cancer tissues using MECP2 mouse mAb with DAB staining.



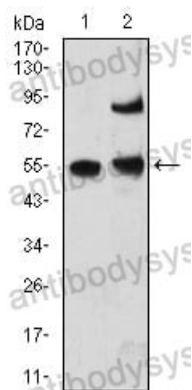
Immunohistochemical

Immunohistochemical analysis of paraffin-embedded human rectum cancer tissues using MECP2 mouse mAb with DAB staining.



Western blot

Western blot analysis using MECP2 mouse mAb against A431 (1) and MCF-7 (2) cell lysate.



Western blot

Western blot analysis using MECP2 mouse mAb against A431 (1) and MCF-7 (2) cell lysate.