

# Anti-SMARCA2 Antibody (R3M52)

## Summary

---

<b>Catalog No.</b>	RHE82805
<b>Clone ID</b>	R3M52
<b>Host species</b>	Mouse
<b>Tested applications</b>	FCM: 1:200-1:400, IF: 1:25-1:50, IHC: 1:200-1:400, WB: 1:500-1:1000
<b>Species reactivity</b>	Human
<b>Form</b>	Liquid
<b>Storage buffer</b>	0.01M PBS, pH 7.4, 0.05% Sodium Azide.
<b>Concentration</b>	1 mg/ml
<b>Purity</b>	>95% as determined by SDS-PAGE.
<b>Clonality</b>	Monoclonal
<b>Isotype</b>	IgG2a
<b>Applications</b>	FCM, IF, IHC, WB
<b>Target</b>	hBRM, SNF2A, Protein brahma homolog, SMARCA2, ATP-dependent helicase SMARCA2, SNF2-alpha, BRM, BAF190B, BRG1-associated factor 190B, Probable global transcription activator SNF2L2, SNF2L2, SWI/SNF-related matrix-associated actin-dependent regulator of chromatin subfamily A member 2
<b>Purification</b>	Protein A/G purified from cell culture supernatant.
<b>Endotoxin level</b>	Please contact with the lab for this information.
<b>Accession</b>	P51531

**Stability and Storage**

Use a manual defrost freezer and avoid repeated freeze-thaw cycles.

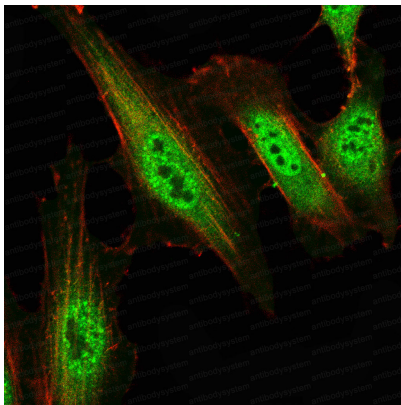
Store at 4°C short term (1-2 weeks). Store at -20°C 12 months. Store at -80°C long term.

**Note**

For research use only.

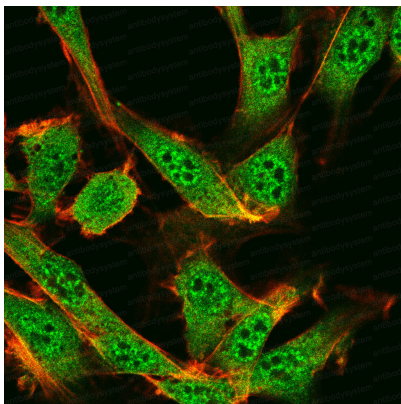
## Data Image

---



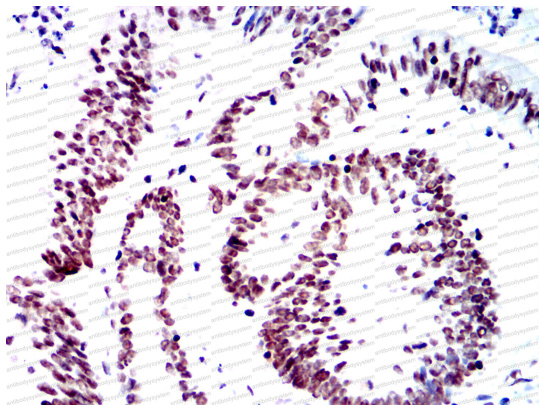
Immunofluorescence

Confocal Immunofluorescence analysis of HELA cells using SMARCA2 mouse mAb (green). Red: Actin filaments have been labeled with Alexa Fluor-555 phalloidin. Blue: DRAQ5 fluorescent DNA dye.



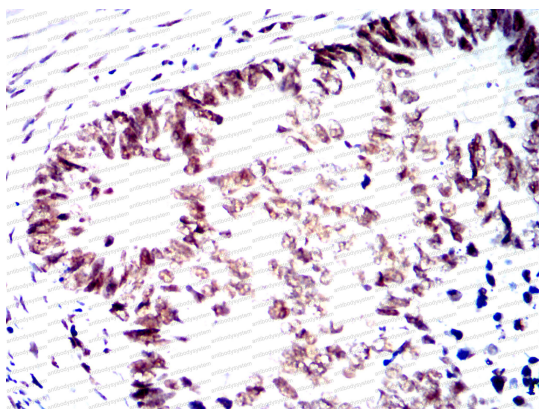
Immunofluorescence

Confocal Immunofluorescence analysis of NIH3T3 cells using SMARCA2 mouse mAb (green). Red: Actin filaments have been labeled with Alexa Fluor-555 phalloidin. Blue: DRAQ5 fluorescent DNA dye.



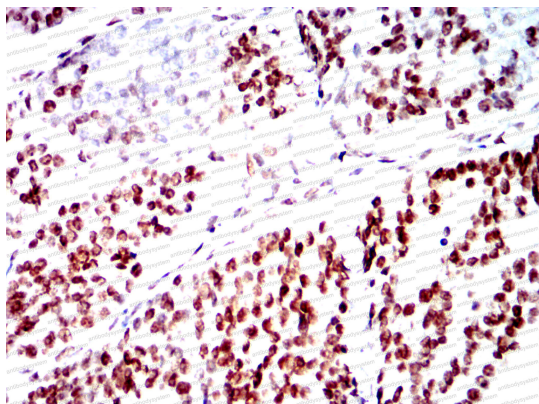
Immunohistochemical

Immunohistochemical analysis of paraffin-embedded human colon cancer tissues using SMARCA2 mouse mAb with DAB staining.



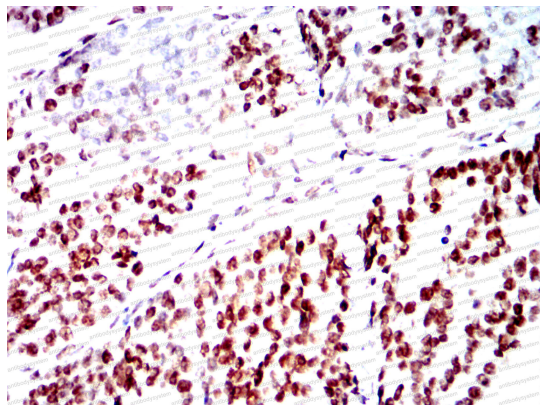
Immunohistochemical

Immunohistochemical analysis of paraffin-embedded human rectal cancer tissues using SMARCA2 mouse mAb with DAB staining.



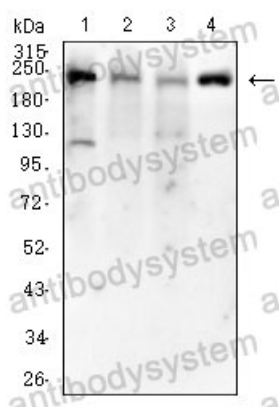
Immunohistochemical

Immunohistochemical analysis of paraffin-embedded human ovarian cancer tissues using SMARCA2 mouse mAb with DAB staining.



Immunohistochemical

Immunohistochemical analysis of paraffin-embedded human ovarian cancer tissues using SMARCA2 mouse mAb with DAB staining.



Western blot

Western blot analysis using SMARCA2 mouse mAb against Hela(1), HEK293(2), HepG2(3), A431(4) cell lysate.