

Anti-SMARCA2 Antibody (R3M51)

Summary

Catalog No.	RHE82804
Clone ID	R3M51
Host species	Mouse
Tested applications	FCM: 1:200-1:400, IF: 1:25-1:50, IHC: 1:200-1:400, WB: 1:500-1:1000
Species reactivity	Human
Form	Liquid
Storage buffer	0.01M PBS, pH 7.4, 0.05% Sodium Azide.
Concentration	1 mg/ml
Purity	>95% as determined by SDS-PAGE.
Clonality	Monoclonal
Isotype	IgG1
Applications	FCM, IF, IHC, WB
Target	hBRM, SNF2A, Protein brahma homolog, SMARCA2, ATP-dependent helicase SMARCA2, SNF2-alpha, BRM, BAF190B, BRG1-associated factor 190B, Probable global transcription activator SNF2L2, SNF2L2, SWI/SNF-related matrix-associated actin-dependent regulator of chromatin subfamily A member 2
Purification	Protein A/G purified from cell culture supernatant.
Endotoxin level	Please contact with the lab for this information.
Accession	P51531

Stability and Storage

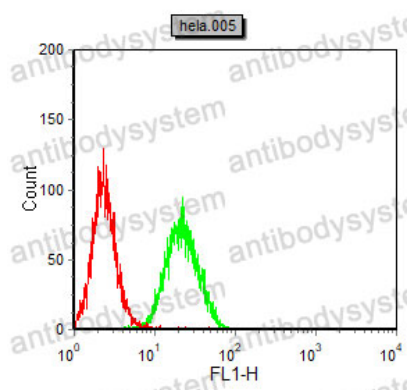
Use a manual defrost freezer and avoid repeated freeze-thaw cycles.

Store at 4°C short term (1-2 weeks). Store at -20°C 12 months. Store at -80°C long term.

Note

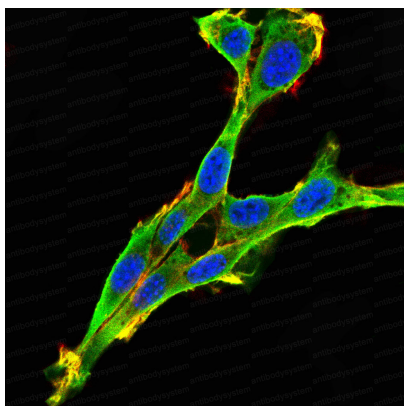
For research use only.

Data Image



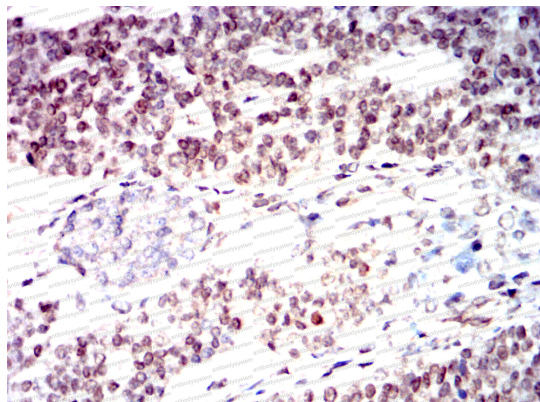
Flow Cytometry

Flow cytometric analysis of HeLa cells using SMARCA2 mouse mAb (green) and negative control (red).



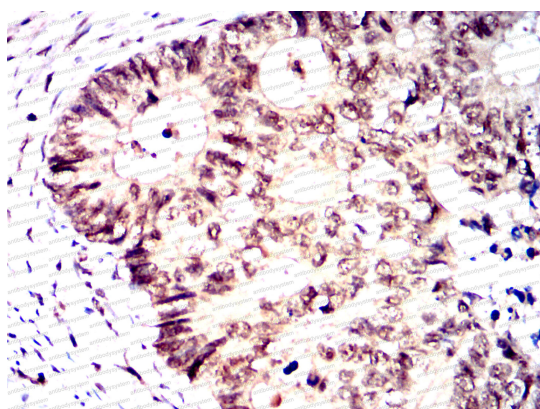
Immunofluorescence

Confocal Immunofluorescence analysis of NIH3T3 cells using SMARCA2 mouse mAb (green). Red: Actin filaments have been labeled with Alexa Fluor-555 phalloidin. Blue: DRAQ5 fluorescent DNA dye.



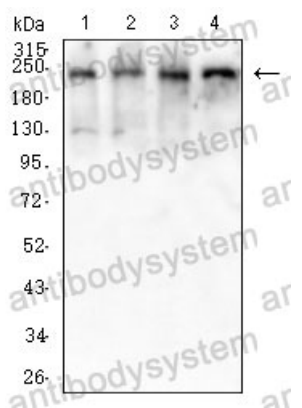
Immunohistochemical

Immunohistochemical analysis of paraffin-embedded human ovarian cancer tissues using SMARCA2 mouse mAb with DAB staining.



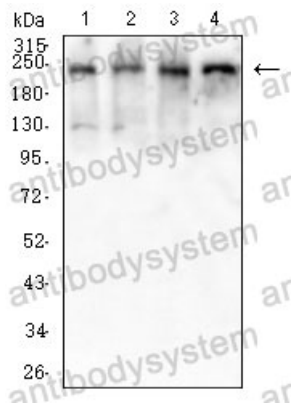
Immunohistochemical

Immunohistochemical analysis of paraffin-embedded human rectal cancer tissues using SMARCA2 mouse mAb with DAB staining.



Western blot

Western blot analysis using SMARCA2 mouse mAb against Hela(1), HEK293(2), HepG2(3), A431(4) cell lysate.



Western blot

Western blot analysis using SMARCA2 mouse mAb against HeLa(1),HEK293(2),HepG2(3),A431(4)cell lysate.