

Anti-SERPINB8 Antibody (R3M30)

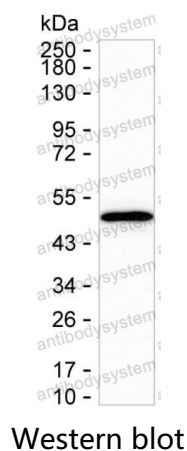
Summary

Catalog No.	RHE76401
Clone ID	R3M30
Host species	Mouse
Tested applications	WB: 1:500-1:1000
Species reactivity	Human
Form	Liquid
Storage buffer	0.01M PBS, pH 7.4, 0.05% Sodium Azide.
Concentration	1 mg/ml
Purity	>95% as determined by SDS-PAGE.
Clonality	Monoclonal
Isotype	IgG2a
Applications	WB
Target	PI-8, Cytoplasmic antiproteinase 2, CAP2, Serpin B8, PI8, CAP-2, Peptidase inhibitor 8, SERPINB8
Purification	Protein A/G purified from cell culture supernatant.
Endotoxin level	Please contact with the lab for this information.
Accession	P50452
Stability and Storage	Use a manual defrost freezer and avoid repeated freeze-thaw cycles. Store at 4°C short term (1-2 weeks). Store at -20°C 12 months. Store at -80°C long term.

Note

For research use only.

Data Image



Western blot analysis using SERPINB8 mouse mAb against THP-1 lysate