

Anti-SULT1A1 Antibody (R3M26)

Summary

Catalog No.	RHE75201
Clone ID	R3M26
Host species	Mouse
Tested applications	IHC: 1:20-1:100
Species reactivity	Human
Form	Liquid
Storage buffer	0.01M PBS, pH 7.4, 0.05% Sodium Azide.
Concentration	1 mg/ml
Purity	>95% as determined by SDS-PAGE.
Clonality	Monoclonal
Isotype	IgG2b
Applications	IHC
Target	HAST1/HAST2, SULT1A1, STP1, STP, Thermostable phenol sulfotransferase, ST1A1, P-PST 1, Phenol-sulfating phenol sulfotransferase 1, ST1A3, Phenol sulfotransferase 1, Sulfotransferase 1A1, Aryl sulfotransferase 1, Ts-PST
Purification	Protein A/G purified from cell culture supernatant.
Endotoxin level	Please contact with the lab for this information.
Accession	P50225

Stability and Storage

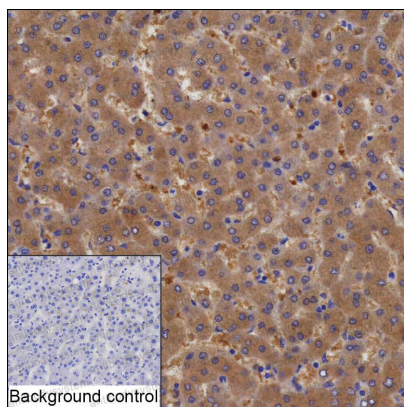
Use a manual defrost freezer and avoid repeated freeze-thaw cycles.

Store at 4°C short term (1-2 weeks). Store at -20°C 12 months. Store at -80°C long term.

Note

For research use only.

Data Image



Immunohistochemical

IHC-P analysis of liver tissue by SULT1A1 antibody (RHE75201). IHC-P was performed using sections of the formalin-fixed paraffin-embedded liver tissue; Result: Hepatocytes are positively stained at the cytoplasm.