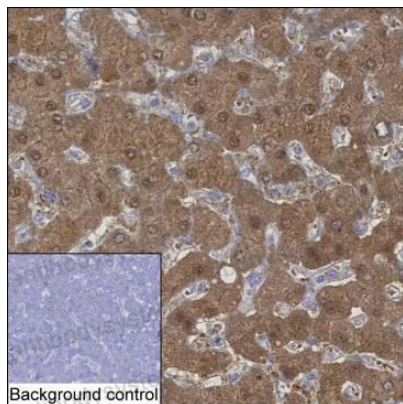


Anti-KHK Antibody (R3M22)

Summary

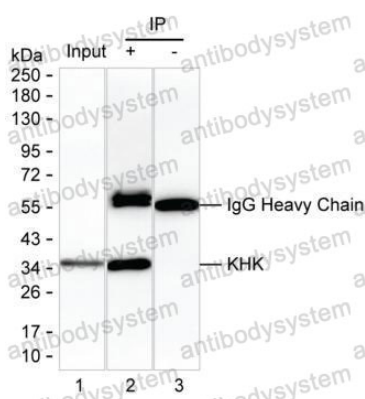
Catalog No.	RHE74202
Clone ID	R3M22
Host species	Mouse
Tested applications	IHC: 1:100-1:200, IP: 1:100-1:200
Species reactivity	Human, Rat
Form	Liquid
Storage buffer	0.01M PBS, pH 7.4, 0.05% Sodium Azide.
Concentration	1 mg/ml
Purity	>95% as determined by SDS-PAGE.
Clonality	Monoclonal
Isotype	IgG2b
Applications	IHC, IP
Target	Ketohexokinase, Hepatic fructokinase, KHK
Purification	Protein A/G purified from cell culture supernatant.
Endotoxin level	Please contact with the lab for this information.
Accession	P50053
Stability and Storage	Use a manual defrost freezer and avoid repeated freeze-thaw cycles. Store at 4°C short term (1-2 weeks). Store at -20°C 12 months. Store at -80°C long term.
Note	For research use only.

Data Image



Immunohistochemical

IHC-P analysis of liver tissue by KHK antibody (RHE74202). IHC-P was performed using sections of the formalin-fixed paraffin-embedded liver tissue; Result: Hepatocytes are positively stained at the cytoplasm.



Immunoprecipitation

Lane 1: Rat kidney tissue lysate; Lane 2: KHK immunoprecipitated from rat kidney tissue lysate by RHE74202; Lane 3: The same Lane 2 but use IgG isotype control antibody; Result: RHE74202 can immunoprecipitate KHK;