

Anti-CD39/ENTPD1 Antibody (R3M20)

Summary

Catalog No.	RHE74002
Clone ID	R3M20
Host species	Mouse
Tested applications	ELISA: 1:10000, IHC: 1:200-1:1000
Species reactivity	Human
Form	Liquid
Storage buffer	0.01M PBS, pH 7.4, 0.05% Sodium Azide.
Concentration	1 mg/ml
Purity	>95% as determined by SDS-PAGE.
Clonality	Monoclonal
Isotype	IgG1
Applications	ELISA, IHC
Target	Ecto-ATP diphosphohydrolase 1, NTPDase 1, ENTPD1, Ecto-ATPase 1, Ecto-apyrase, Ecto-ATPDase 1, Ectonucleoside triphosphate diphosphohydrolase 1, CD39, Lymphoid cell activation antigen
Purification	Protein A/G purified from cell culture supernatant.
Endotoxin level	Please contact with the lab for this information.
Accession	P49961

Stability and Storage

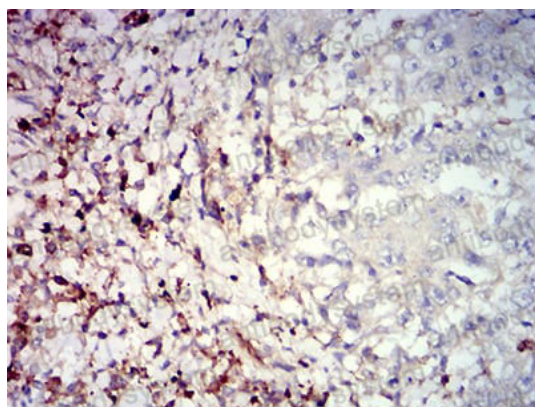
Use a manual defrost freezer and avoid repeated freeze-thaw cycles.

Store at 4°C short term (1-2 weeks). Store at -20°C 12 months. Store at -80°C long term.

Note

For research use only.

Data Image



Immunohistochemical

Immunohistochemical analysis of paraffin-embedded human stomach cancer tissues using CD39 mouse mAb with DAB staining.