

Anti-CDKN1C Antibody (R3M16)

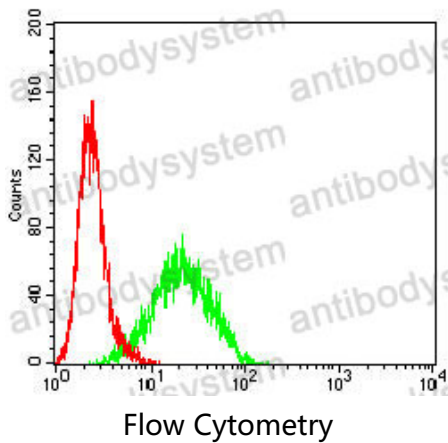
Summary

| | |
|------------------------------|---|
| Catalog No. | RHE73802 |
| Clone ID | R3M16 |
| Host species | Mouse |
| Tested applications | ELISA: 1:10000, FCM: 1:200-1:400, IHC: 1:200-1:1000, WB: 1:500-1:2000 |
| Species reactivity | Human |
| Form | Liquid |
| Storage buffer | 0.01M PBS, pH 7.4, 0.05% Sodium Azide. |
| Concentration | 1 mg/ml |
| Purity | >95% as determined by SDS-PAGE. |
| Clonality | Monoclonal |
| Isotype | IgG1 |
| Applications | ELISA, FCM, IHC, WB |
| Target | Cyclin-dependent kinase inhibitor 1C, KIP2, CDKN1C, Cyclin-dependent kinase inhibitor p57, p57Kip2 |
| Purification | Protein A/G purified from cell culture supernatant. |
| Endotoxin level | Please contact with the lab for this information. |
| Accession | P49918 |
| Stability and Storage | Use a manual defrost freezer and avoid repeated freeze-thaw cycles. Store at 4°C short term (1-2 weeks). Store at -20°C 12 months. Store at -80°C long term. |

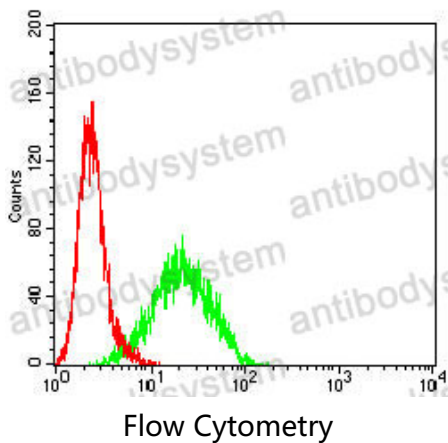
Note

For research use only.

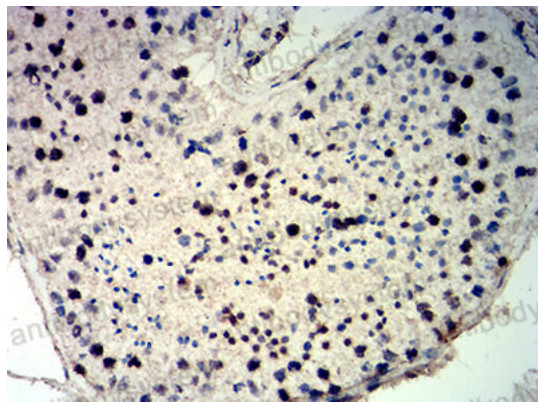
Data Image



Flow cytometric analysis of Hela cells using CDKN1C mouse mAb (green) and negative control (red).

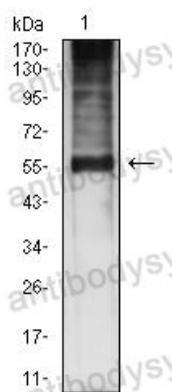


Flow cytometric analysis of MCF-7 cells using CDKN1C mouse mAb (green) and negative control (red).



Immunohistochemical

Immunohistochemical analysis of paraffin-embedded human testis tissues using CDKN1C mouse mAb with DAB staining.



Western blot

Western blot analysis using CDKN1C mouse mAb against SK-Br-3 (1) cell lysate.