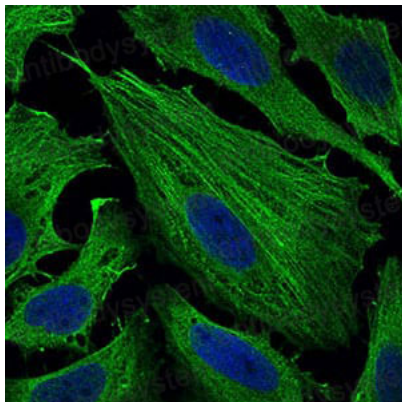


Anti-SMCP Antibody (R3M15)

Summary

Catalog No.	RHE72801
Clone ID	R3M15
Host species	Mouse
Tested applications	ELISA: 1:10000, IF: 1:200-1:1000
Species reactivity	Human
Form	Liquid
Storage buffer	0.01M PBS, pH 7.4, 0.05% Sodium Azide.
Concentration	1 mg/ml
Purity	>95% as determined by SDS-PAGE.
Clonality	Monoclonal
Isotype	IgG2b
Applications	ELISA, IF
Target	MCS, MCSP, SMCP, Sperm mitochondrial-associated cysteine-rich protein
Purification	Protein A/G purified from cell culture supernatant.
Endotoxin level	Please contact with the lab for this information.
Accession	P49901
Stability and Storage	Use a manual defrost freezer and avoid repeated freeze-thaw cycles. Store at 4°C short term (1-2 weeks). Store at -20°C 12 months. Store at -80°C long term.
Note	For research use only.

Data Image



Immunofluorescence

Immunofluorescence analysis of Hela cells using SMCP mouse mAb (green). Blue: DRAQ5 fluorescent DNA dye.