

Anti-GSK3B Antibody (R3M07)

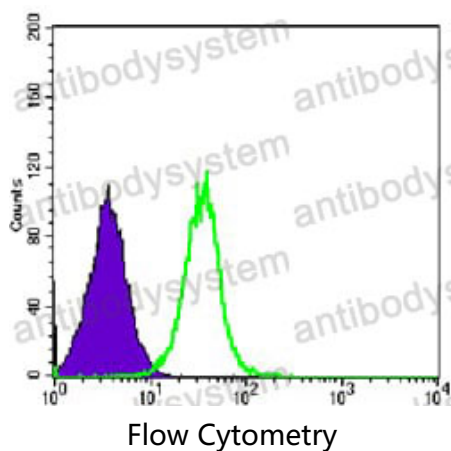
Summary

Catalog No.	RHE72103
Clone ID	R3M07
Host species	Mouse
Tested applications	FCM: 1:200-1:400, IF: 1:200-1:1000, IHC: 1:200-1:1000, WB: 1:500-1:2000
Species reactivity	Human, Mouse, Rat, Monkey
Form	Liquid
Storage buffer	0.01M PBS, pH 7.4, 0.05% Sodium Azide.
Concentration	1 mg/ml
Purity	>95% as determined by SDS-PAGE.
Clonality	Monoclonal
Isotype	IgG2a
Applications	FCM, IF, IHC, WB
Target	Glycogen synthase kinase-3 beta, GSK3B, Serine/threonine-protein kinase GSK3B, GSK-3 beta
Purification	Protein A/G purified from cell culture supernatant.
Endotoxin level	Please contact with the lab for this information.
Accession	P49841
Stability and Storage	Use a manual defrost freezer and avoid repeated freeze-thaw cycles. Store at 4°C short term (1-2 weeks). Store at -20°C 12 months. Store at -80°C long term.

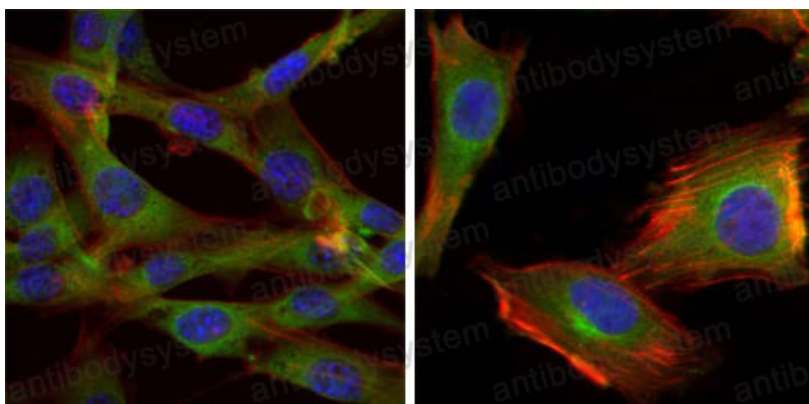
Note

For research use only.

Data Image

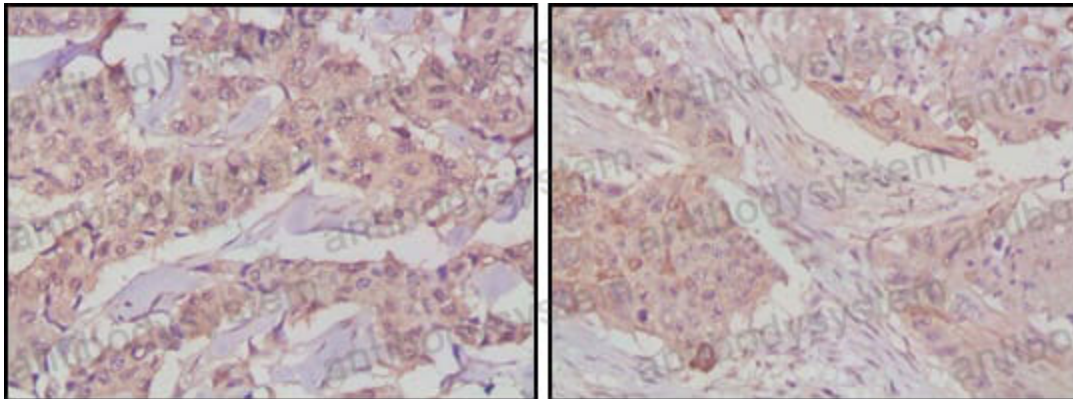


Flow cytometric analysis of HeLa cells using GSK3B mouse mAb (green) and negative control (purple).



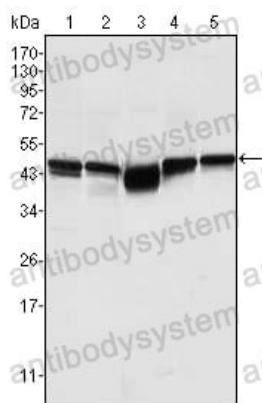
Immunofluorescence

Immunofluorescence analysis of HeLa (left) and U251 (right) cells using GSK3B mouse mAb (green). Blue: DRAQ5 fluorescent DNA dye. Red: Actin filament have been labeled with Alexa Fluor phalloidin.



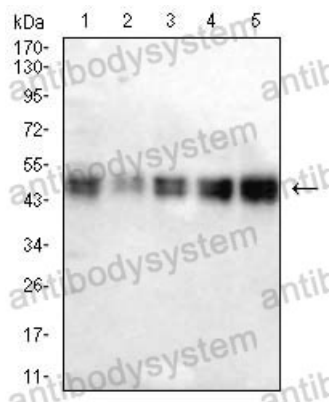
Immunohistochemical analysis of embedded human lung cancer (left) and breast cancer tissues (right) using mouse mAb with DAB staining.

Immunohistochemical



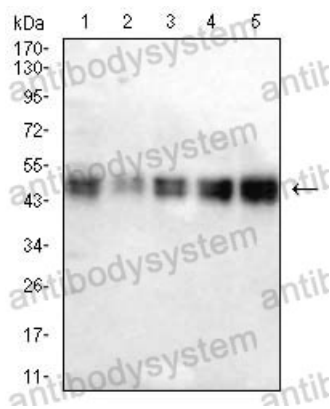
Western blot analysis using GSK3 mAb against A549 (1), K562 (2), P12 (3), NIH/3T3 (4), and HEK293 (5) cell lysates.

Western blot



Western blot analysis using GSK3 mAb against COS7(1),C2C12(2),NIH/3T3(3),C6(4) cell lysate.

Western blot



Western blot

Western blot analysis using GSK3
mAb against
COS7(1),C2C12(2),NIH/3T3(3),C6(4)
cell lysate.