

# Anti-COMP Antibody (R3L98)

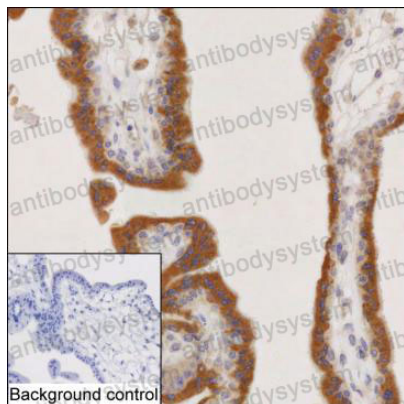
## Summary

---

<b>Catalog No.</b>	RHE69002
<b>Clone ID</b>	R3L98
<b>Host species</b>	Mouse
<b>Tested applications</b>	IHC: 1:100-1:200
<b>Species reactivity</b>	Human
<b>Form</b>	Liquid
<b>Storage buffer</b>	0.01M PBS, pH 7.4, 0.05% Sodium Azide.
<b>Concentration</b>	1 mg/ml
<b>Purity</b>	>95% as determined by SDS-PAGE.
<b>Clonality</b>	Monoclonal
<b>Isotype</b>	IgG1
<b>Applications</b>	IHC
<b>Target</b>	TSP5, Thrombospondin-5, COMP, Cartilage oligomeric matrix protein
<b>Purification</b>	Protein A/G purified from cell culture supernatant.
<b>Endotoxin level</b>	Please contact with the lab for this information.
<b>Accession</b>	P49747
<b>Stability and Storage</b>	Use a manual defrost freezer and avoid repeated freeze-thaw cycles. Store at 4°C short term (1-2 weeks). Store at -20°C 12 months. Store at -80°C long term.
<b>Note</b>	For research use only.

## Data Image

---



Immunohistochemical

IHC-P analysis of placenta tissue by COMP antibody (RHE69002). IHC-P was performed using sections of the formalin-fixed paraffin-embedded placenta tissue; Result: Trophoblastic cells are positively stained at the cytoplasm.