

# Anti-CD183/CXCR3 Antibody (R3L90)

## Summary

---

<b>Catalog No.</b>	RHE67902
<b>Clone ID</b>	R3L90
<b>Host species</b>	Mouse
<b>Tested applications</b>	ELISA: 1:10000, FCM: 1:200-1:400, IHC: 1:200-1:1000, WB: 1:500-1:2000
<b>Species reactivity</b>	Human
<b>Form</b>	Liquid
<b>Storage buffer</b>	0.01M PBS, pH 7.4, 0.05% Sodium Azide.
<b>Concentration</b>	1 mg/ml
<b>Purity</b>	>95% as determined by SDS-PAGE.
<b>Clonality</b>	Monoclonal
<b>Isotype</b>	IgG1
<b>Applications</b>	ELISA, FCM, IHC, WB
<b>Target</b>	CXCR3, G protein-coupled receptor 9, CXC-R3, Interferon-inducible protein 10 receptor, IP-10 receptor, C-X-C chemokine receptor type 3, GPR9, CD183, CKR-L2, CXCR-3
<b>Purification</b>	Protein A/G purified from cell culture supernatant.
<b>Endotoxin level</b>	Please contact with the lab for this information.
<b>Accession</b>	P49682

**Stability and Storage**

Use a manual defrost freezer and avoid repeated freeze-thaw cycles.

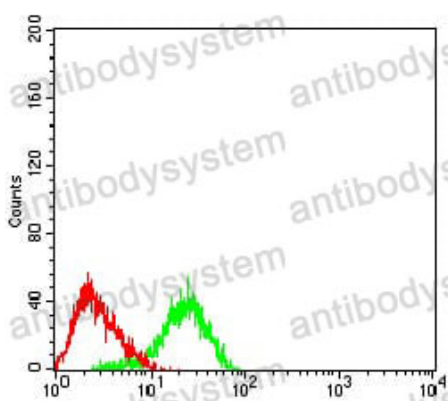
Store at 4°C short term (1-2 weeks). Store at -20°C 12 months. Store at -80°C long term.

**Note**

For research use only.

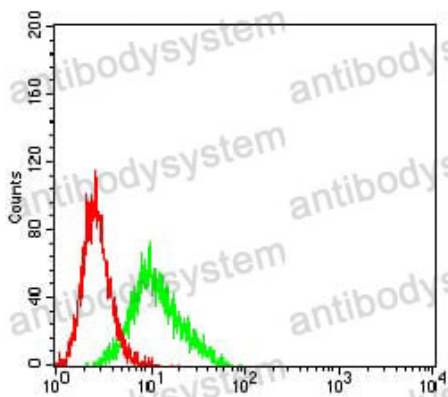
**Data Image**

---



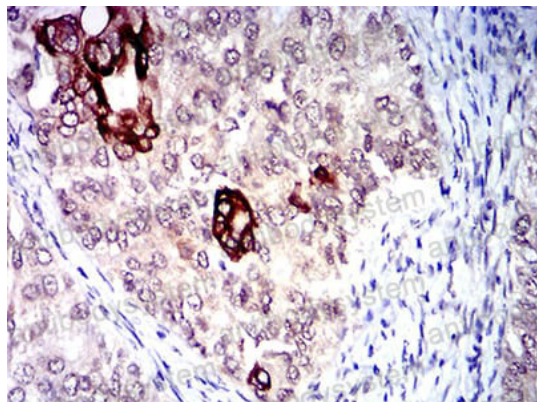
Flow Cytometry

Flow cytometric analysis of Jurkat cells using CD183 mouse mAb (green) and negative control (red).



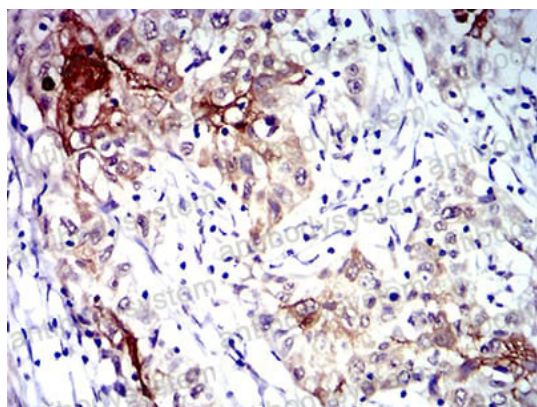
Flow Cytometry

Flow cytometric analysis of Ramos cells using CD183 mouse mAb (green) and negative control (red).



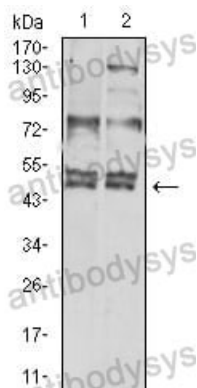
Immunohistochemical

Immunohistochemical analysis of paraffin-embedded human cervical cancer tissues using CD183 mouse mAb with DAB staining.



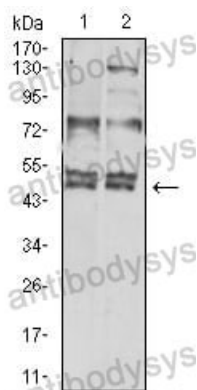
Immunohistochemical

Immunohistochemical analysis of paraffin-embedded human esophageal cancer tissues using CD183 mouse mAb with DAB staining.



Western blot

Western blot analysis using CD183 mouse mAb against Hela (1) and L-02 (2) cell lysate.



Western blot

Western blot analysis using CD183 mouse mAb against Hela (1) and L-02 (2) cell lysate.