

Anti-CARS1 Antibody (R3L88)

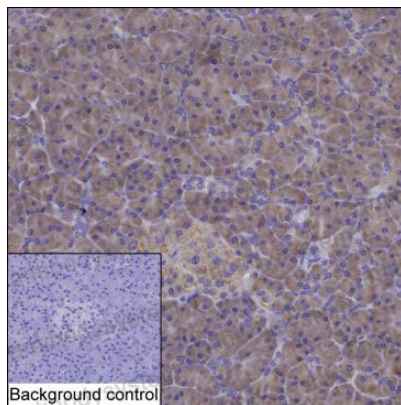
Summary

Catalog No.	RHE66503
Clone ID	R3L88
Host species	Mouse
Tested applications	IHC: 1:100-1:200, IP: 1:100-1:200
Species reactivity	Human
Form	Liquid
Storage buffer	0.01M PBS, pH 7.4, 0.05% Sodium Azide.
Concentration	1 mg/ml
Purity	>95% as determined by SDS-PAGE.
Clonality	Monoclonal
Isotype	IgG1
Applications	IHC, IP
Target	CysteinyI-tRNA synthetase, CysRS, CARS, CARS1, Cysteine--tRNA ligase, cytoplasmic
Purification	Protein A/G purified from cell culture supernatant.
Endotoxin level	Please contact with the lab for this information.
Accession	P49589
Stability and Storage	Use a manual defrost freezer and avoid repeated freeze-thaw cycles. Store at 4°C short term (1-2 weeks). Store at -20°C 12 months. Store at -80°C long term.

Note

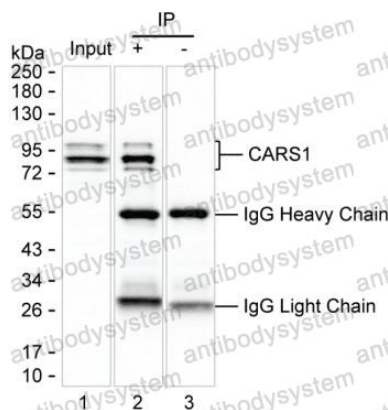
For research use only.

Data Image



Immunohistochemical

IHC-P analysis of pancreas tissue by CARS1 antibody (RHE66503). IHC-P was performed using sections of the formalin-fixed paraffin-embedded pancreas tissue; Result: Exocrine glandular cells and pancreatic endocrine cells are weakly stained at the cytoplasm.



Immunoprecipitation

Lane 1: HEK-293 lysate ; Lane 2: CARS1 immunoprecipitated from HEK-293 lysate by RHE66503; Lane 3: The same Lane 2 but use IgG isotype control antibody ; Result: RHE66503 can immunoprecipitate CARS1;