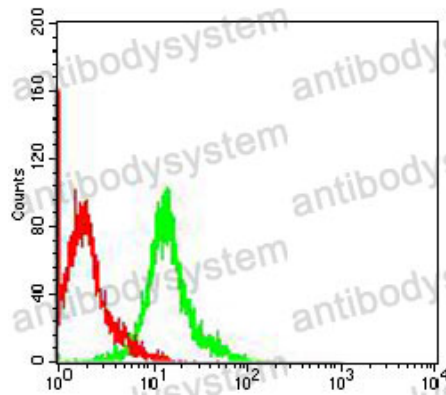


Anti-SOX2 Antibody (R3L73)

Summary

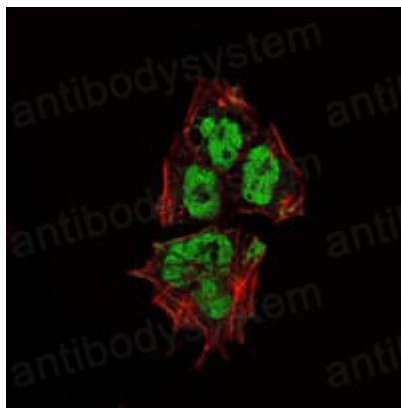
Catalog No.	RHE57501
Clone ID	R3L73
Host species	Mouse
Tested applications	FCM: 1:200-1:400, IF: 1:200-1:1000, IHC: 1:200-1:1000, WB: 1:500-1:1000
Species reactivity	Human, Mouse, Rat, Rabbit, Monkey
Form	Liquid
Storage buffer	0.01M PBS, pH 7.4, 0.05% Sodium Azide.
Concentration	1 mg/ml
Purity	>95% as determined by SDS-PAGE.
Clonality	Monoclonal
Isotype	IgG1
Applications	FCM, IF, IHC, WB
Target	Transcription factor SOX-2, SOX2
Purification	Protein A/G purified from cell culture supernatant.
Endotoxin level	Please contact with the lab for this information.
Accession	P48431
Stability and Storage	Use a manual defrost freezer and avoid repeated freeze-thaw cycles. Store at 4°C short term (1-2 weeks). Store at -20°C 12 months. Store at -80°C long term.
Note	For research use only.

Data Image



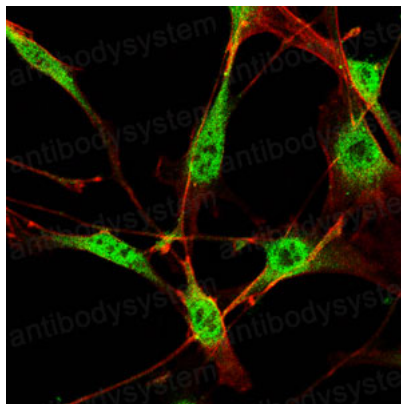
Flow Cytometry

Flow cytometric analysis of COS7 cells using SOX2 mouse mAb (green) and negative control (red).



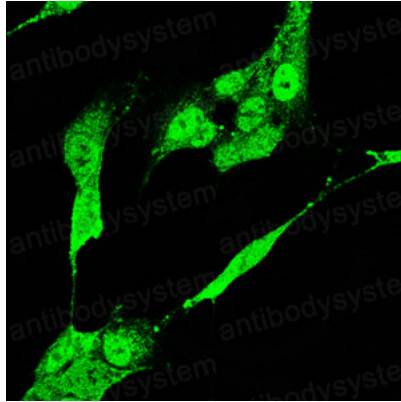
Immunofluorescence

Immunofluorescence analysis of NTERA-2 cells using SOX2 mouse mAb (green). Red: Actin filaments have been labeled with Alexa Fluor-555 phalloidin.



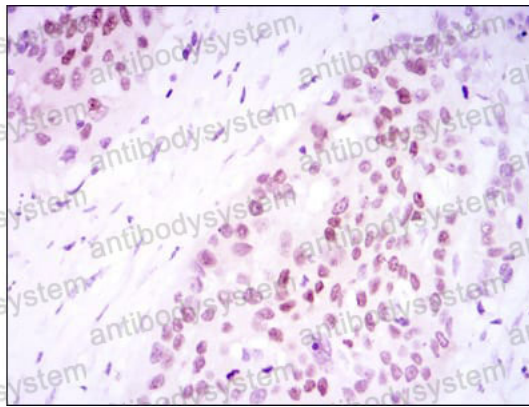
Immunofluorescence

Immunofluorescence analysis of NIH3T3 cells using SOX2 mouse mAb (green). Red: Actin filaments have been labeled with Alexa Fluor-555 phalloidin.



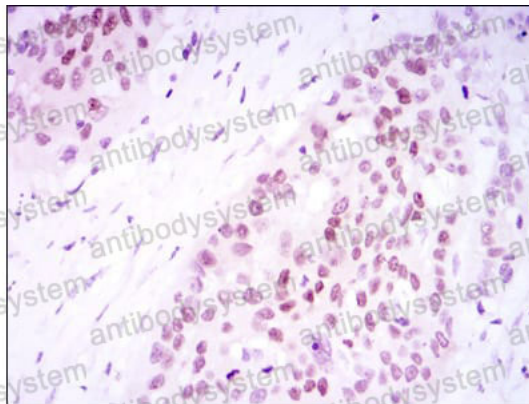
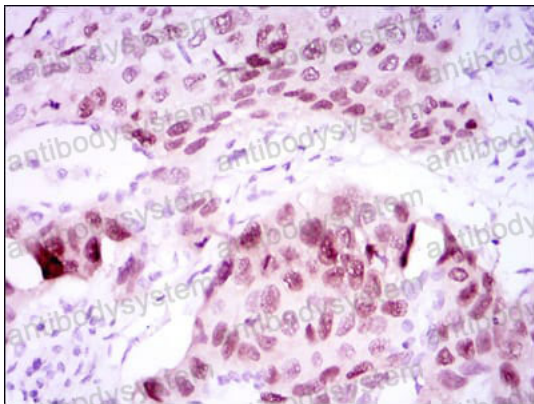
Immunofluorescence

Immunofluorescence
analysis of C6 cells using
SOX2 mouse mAb
(green)



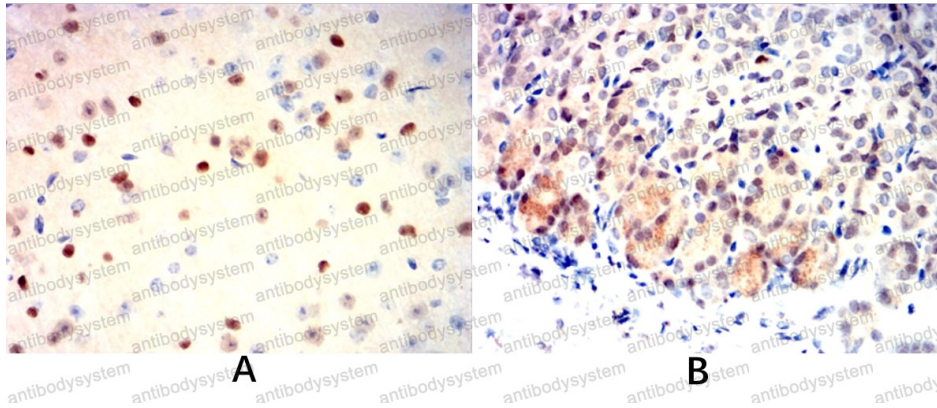
Immunohistochemical

Immunohistochemical
analysis of paraffin-
embedded human lung
cancer tissues (left) and
esophageal cancer
tissues (right) using
SOX2 mouse mAb with
DAB staining.



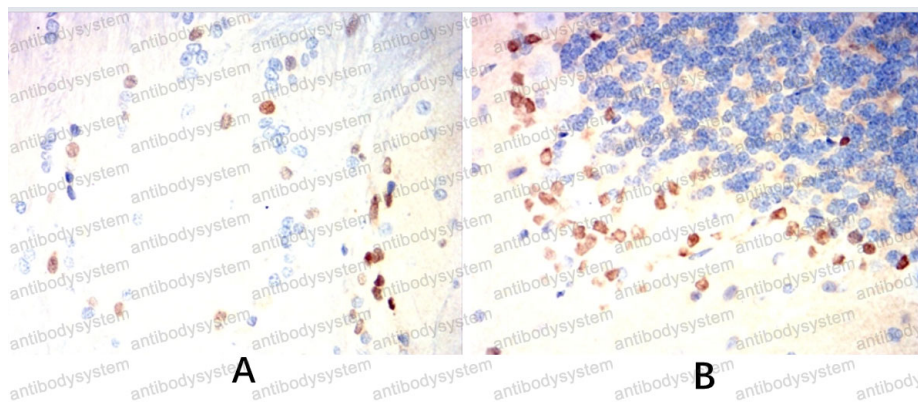
Immunohistochemical

Immunohistochemical
analysis of paraffin-
embedded human lung
cancer tissues (left) and
esophageal cancer
tissues (right) using
SOX2 mouse mAb with
DAB staining.



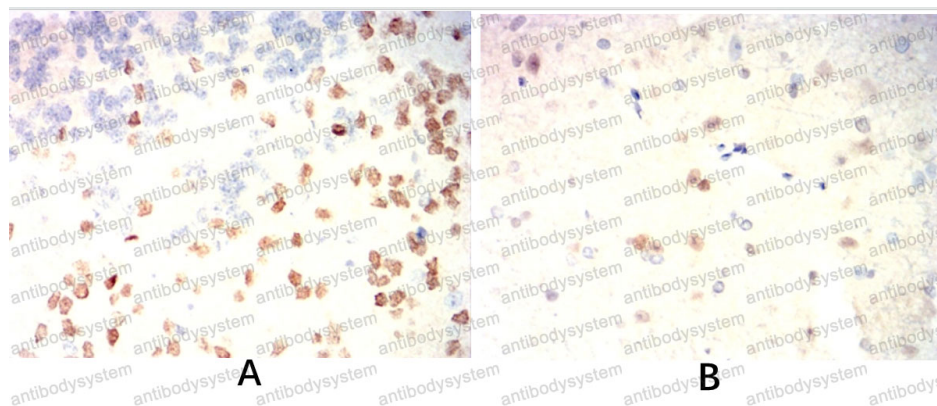
Immunohistochemical

Immunohistochemical analysis of paraffin-embedded Mouse brain(A) Mouse stomach(B) using SOX2 mouse mAb with DAB staining.



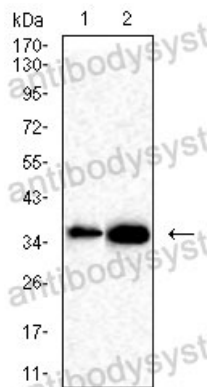
Immunohistochemical

Immunohistochemical analysis of paraffin-embedded Rat brain(A) Rat cerebellum(B) using SOX2 mouse mAb with DAB staining.



Immunohistochemical

Immunohistochemical analysis of paraffin-embedded Rabbit cerebellum(A) Rabbit spinal cord(B) using SOX2 mouse mAb with DAB staining.



Western blot

Western blot analysis
using SOX2 mouse mAb
against C6(1),F9(2) cell
lysate.