

# Anti-CXCL12/SDF-1 Antibody (R3L70)

## Summary

---

<b>Catalog No.</b>	RHE55403
<b>Clone ID</b>	R3L70
<b>Host species</b>	Mouse
<b>Tested applications</b>	IHC: 1:100-1:200, WB: 1:500-1:1000
<b>Species reactivity</b>	Human
<b>Form</b>	Liquid
<b>Storage buffer</b>	0.01M PBS, pH 7.4, 0.05% Sodium Azide.
<b>Concentration</b>	1 mg/ml
<b>Purity</b>	>95% as determined by SDS-PAGE.
<b>Clonality</b>	Monoclonal
<b>Isotype</b>	IgG2a
<b>Applications</b>	IHC, WB
<b>Target</b>	Intercrine reduced in hepatomas, hSDF-1, Stromal cell-derived factor 1, SDF-1, Pre-B cell growth-stimulating factor, SDF1, SDF1A, C-X-C motif chemokine 12, SDF1B, CXCL12, IRH, PBSF, hIRH
<b>Purification</b>	Protein A/G purified from cell culture supernatant.
<b>Endotoxin level</b>	Please contact with the lab for this information.
<b>Accession</b>	P48061

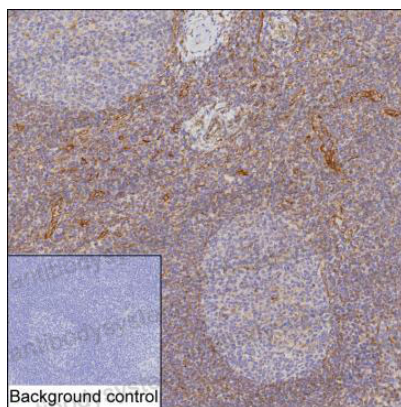
**Stability and Storage**

Use a manual defrost freezer and avoid repeated freeze-thaw cycles.

Store at 4°C short term (1-2 weeks). Store at -20°C 12 months. Store at -80°C long term.

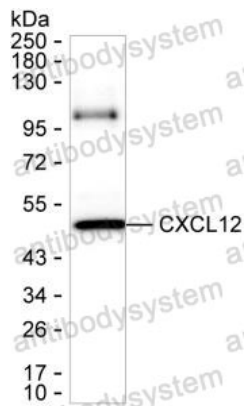
**Note**

For research use only.

**Data Image**

Immunohistochemical

IHC-P analysis of tonsil tissue by CXCL12 antibody (RHE55403). IHC-P was performed using sections of the formalin-fixed paraffin-embedded tonsil tissue; Result: Vascular endothelial cell and a part of non-germinal center cells are positively stained at the cytoplasm and cell membrane.



Western blot

Result: RHE55403 can detect CXCL12 by Western blotting.