

Anti-LIMS1 Antibody (R3L69)

Summary

Catalog No.	RHE55201
Clone ID	R3L69
Host species	Mouse
Tested applications	ELISA: 1:10000, FCM: 1:200-1:400, IF: 1:200-1:1000, WB: 1:500-1:2000
Species reactivity	Human
Form	Liquid
Storage buffer	0.01M PBS, pH 7.4, 0.05% Sodium Azide.
Concentration	1 mg/ml
Purity	>95% as determined by SDS-PAGE.
Clonality	Monoclonal
Isotype	IgG1
Applications	ELISA, FCM, IF, WB
Target	PINCH, Renal carcinoma antigen NY-REN-48, PINCH1, LIM and senescent cell antigen-like-containing domain protein 1, LIMS1, PINCH-1, Particularly interesting new Cys-His protein 1
Purification	Protein A/G purified from cell culture supernatant.
Endotoxin level	Please contact with the lab for this information.
Accession	P48059

Stability and Storage

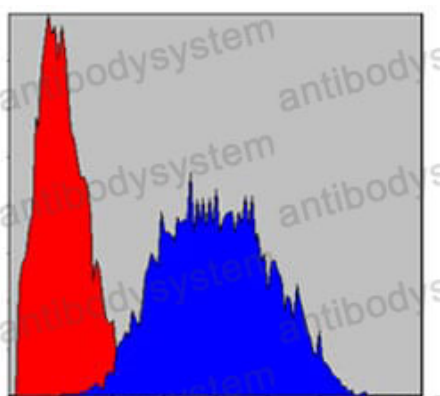
Use a manual defrost freezer and avoid repeated freeze-thaw cycles.

Store at 4°C short term (1-2 weeks). Store at -20°C 12 months. Store at -80°C long term.

Note

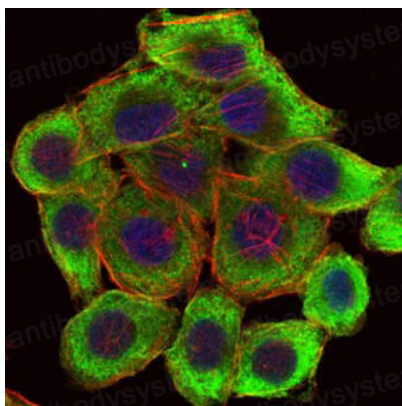
For research use only.

Data Image



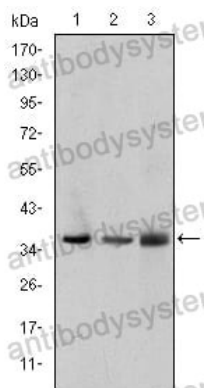
Flow Cytometry

Flow cytometric analysis of Hela cells using PINCH mouse mAb (blue) and negative control (red).



Immunofluorescence

Immunofluorescence analysis of HepG2 cells using PINCH mouse mAb (green). Blue: DRAQ5 fluorescent DNA dye. Red: Actin filaments have been labeled with Alexa Fluor-555 phalloidin.



Western blot

Western blot analysis using PINCH mouse mAb against A549 (1), Jurkat (2), and HeLa (3) cell lysate.