

Anti-RISP/UQCRFS1 Antibody (R3L65)

Summary

Catalog No.	RHE54002
Clone ID	R3L65
Host species	Mouse
Tested applications	ELISA: 1:10000, FCM: 1:200-1:400, IF: 1:200-1:1000, WB: 1:500-1:2000
Species reactivity	Human
Form	Liquid
Storage buffer	0.01M PBS, pH 7.4, 0.05% Sodium Azide.
Concentration	1 mg/ml
Purity	>95% as determined by SDS-PAGE.
Clonality	Monoclonal
Isotype	IgG1
Applications	ELISA, FCM, IF, WB
Target	Rieske iron-sulfur protein, UQCRFS1 mitochondrial targeting sequence, UQCRFS1, Ubiquinol-cytochrome c reductase 8 kDa protein, Cytochrome b-c1 complex subunit 11, Subunit 9, Su9, RISP, Rieske protein UQCRFS1, Cytochrome b-c1 complex subunit 5, Complex III subunit 5, 8 kDa subunit 9, Ubiquinol-cytochrome c reductase iron-sulfur subunit, UQCRFS1 MTS, Complex III subunit IX, Cytochrome b-c1 complex subunit Rieske, mitochondrial
Purification	Protein A/G purified from cell culture supernatant.
Endotoxin level	Please contact with the lab for this information.

Recombinant Proteins & Antibodies

Accession P47985**Stability and Storage**

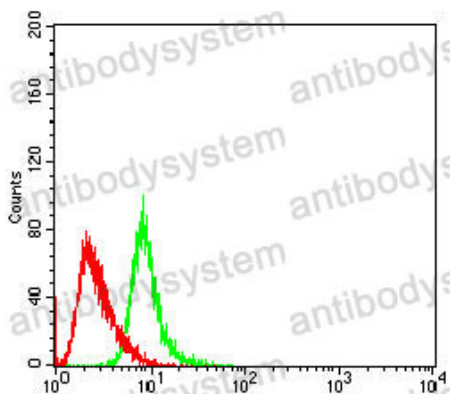
Use a manual defrost freezer and avoid repeated freeze-thaw cycles.

Store at 4°C short term (1-2 weeks). Store at -20°C 12 months. Store at -80°C long term.

Note

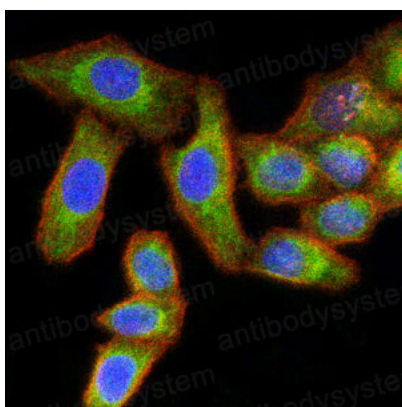
For research use only.

Data Image



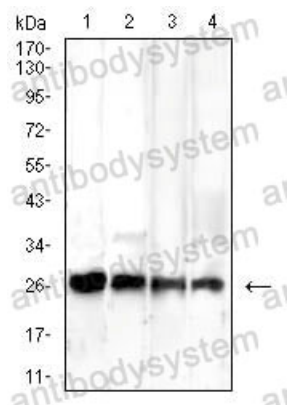
Flow Cytometry

Flow cytometric analysis of Hela cells using RISP mouse mAb (green) and negative control (red).



Immunofluorescence

Immunofluorescence analysis of Hela cells using RISP mouse mAb (green). Blue: DRAQ5 fluorescent DNA dye. Red: Actin filaments have been labeled with Alexa Fluor- 555 phalloidin.



Western blot

Western blot analysis using RISP mouse mAb against A549 (1), HeLa (2), Raji (3) and HepG2 (4) cell lysate.