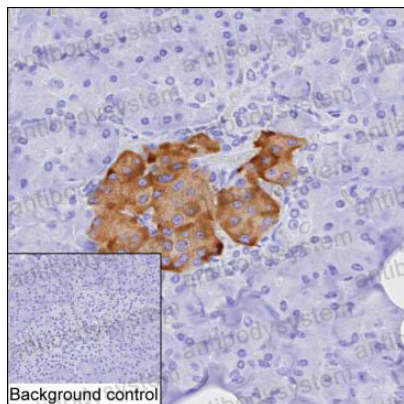


Anti-NPTX2 Antibody (R3L64)

Summary

Catalog No.	RHE53801
Clone ID	R3L64
Host species	Mouse
Tested applications	IHC: 1:100-1:200
Species reactivity	Human
Form	Liquid
Storage buffer	0.01M PBS, pH 7.4, 0.05% Sodium Azide.
Concentration	1 mg/ml
Purity	>95% as determined by SDS-PAGE.
Clonality	Monoclonal
Isotype	IgG1
Applications	IHC
Target	NP-II, NP2, Neuronal pentraxin-2, Neuronal pentraxin II, NPTX2
Purification	Protein A/G purified from cell culture supernatant.
Endotoxin level	Please contact with the lab for this information.
Accession	P47972
Stability and Storage	Use a manual defrost freezer and avoid repeated freeze-thaw cycles. Store at 4°C short term (1-2 weeks). Store at -20°C 12 months. Store at -80°C long term.
Note	For research use only.

Data Image



Immunohistochemical

IHC-P analysis of pancreas tissue by NPTX2 antibody (RHE53801). IHC-P was performed using sections of the formalin-fixed paraffin-embedded pancreas tissue; Result: Endocrine cells are positively stained at the cytoplasm.