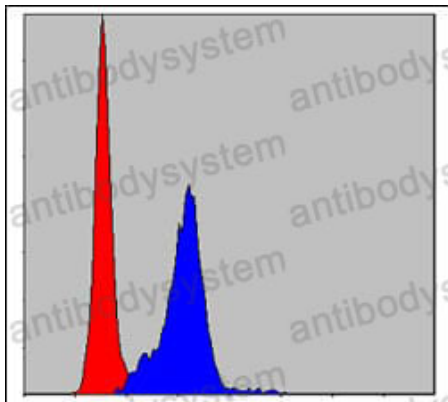


Anti-CRK Antibody (R3L53)

Summary

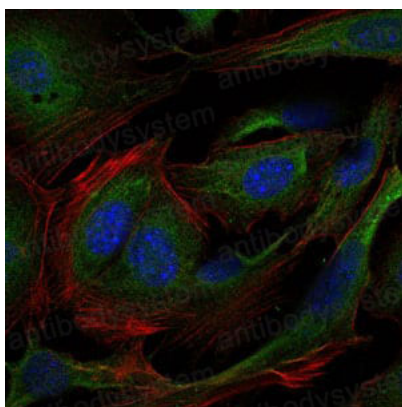
Catalog No.	RHE47601
Clone ID	R3L53
Host species	Mouse
Tested applications	ELISA: 1:10000, FCM: 1:200-1:400, IF: 1:200-1:1000, IHC: 1:200-1:1000
Species reactivity	Human
Form	Liquid
Storage buffer	0.01M PBS, pH 7.4, 0.05% Sodium Azide.
Concentration	1 mg/ml
Purity	>95% as determined by SDS-PAGE.
Clonality	Monoclonal
Isotype	IgG2b
Applications	ELISA, FCM, IF, IHC
Target	Adapter molecule crk, p38, CRK, Proto-oncogene c-Crk
Purification	Protein A/G purified from cell culture supernatant.
Endotoxin level	Please contact with the lab for this information.
Accession	P46108
Stability and Storage	Use a manual defrost freezer and avoid repeated freeze-thaw cycles. Store at 4°C short term (1-2 weeks). Store at -20°C 12 months. Store at -80°C long term.
Note	For research use only.

Data Image



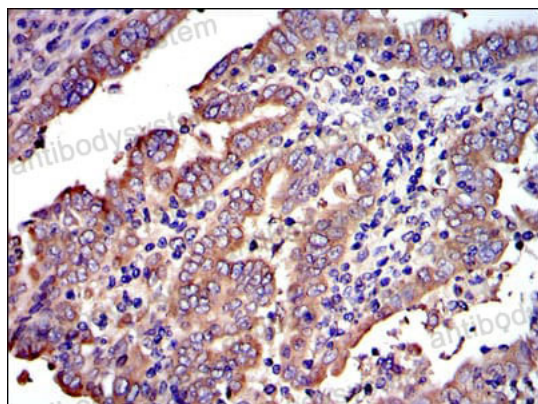
Flow Cytometry

Flow cytometric analysis of Hela cells using CRK mouse mAb (blue) and negative control (red).



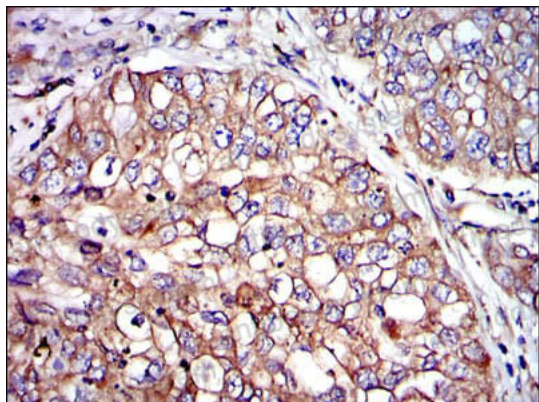
Immunofluorescence

Immunofluorescence analysis of 3T3-L1 cells using CRK mouse mAb (green). Blue: DRAQ5 fluorescent DNA dye. Red: Actin filaments have been labeled with Alexa Fluor-555 phalloidin.



Immunohistochemical

Immunohistochemical analysis of paraffin-embedded human intima cancer tissues using CRK mouse mAb with DAB staining.



Immunohistochemical

Immunohistochemical analysis of paraffin-embedded human lung cancer tissues using CRK mouse mAb with DAB staining.