

Anti-5HT3/HTR3A Antibody (R3L51)

Summary

Catalog No.	RHE47404
Clone ID	R3L51
Host species	Mouse
Tested applications	ELISA: 1:10000, FCM: 1:200-1:400, IF: 1:100-1:500, IHC: 1:200-1:1000
Species reactivity	Human
Form	Liquid
Storage buffer	0.01M PBS, pH 7.4, 0.05% Sodium Azide.
Concentration	1 mg/ml
Purity	>95% as determined by SDS-PAGE.
Clonality	Monoclonal
Isotype	IgG2a
Applications	ELISA, FCM, IF, IHC
Target	HTR3, 5-HT-3, HTR3A, 5-hydroxytryptamine receptor 3A, 5-HT3A, 5-HT3-A, Serotonin-gated ion channel receptor, 5-hydroxytryptamine receptor 3, 5-HT3R, 5HT3R, Serotonin receptor 3A
Purification	Protein A/G purified from cell culture supernatant.
Endotoxin level	Please contact with the lab for this information.
Accession	P46098

Stability and Storage

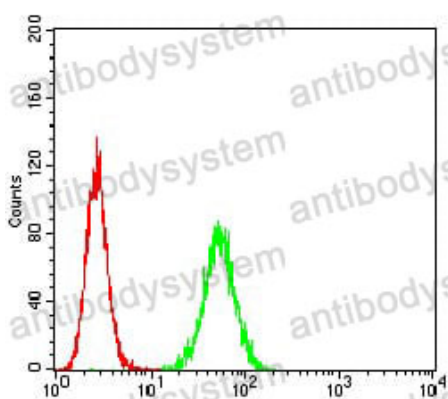
Use a manual defrost freezer and avoid repeated freeze-thaw cycles.

Store at 4°C short term (1-2 weeks). Store at -20°C 12 months. Store at -80°C long term.

Note

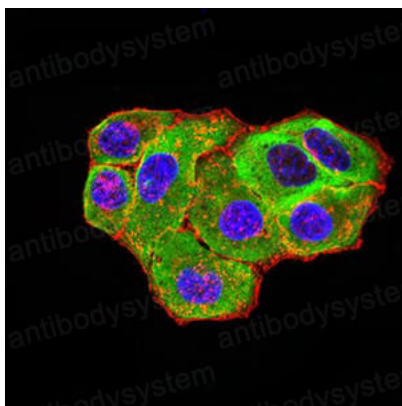
For research use only.

Data Image



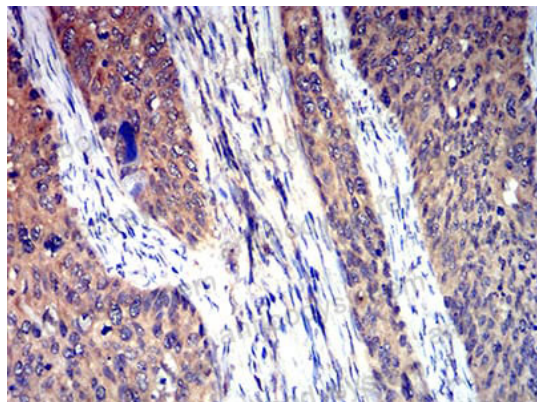
Flow Cytometry

Flow cytometric analysis of Hela cells using HTR3A mouse mAb (green) and negative control (red).



Immunofluorescence

Immunofluorescence analysis of Hela cells using HTR3A mouse mAb (green). Blue: DRAQ5 fluorescent DNA dye. Red: Actin filaments have been labeled with Alexa Fluor- 555 phalloidin.



Immunohistochemical

Immunohistochemical analysis of paraffin-embedded human cervical cancer tissues using HTR3A mouse mAb with DAB staining.