

Anti-CCR10 Antibody (R3L48)

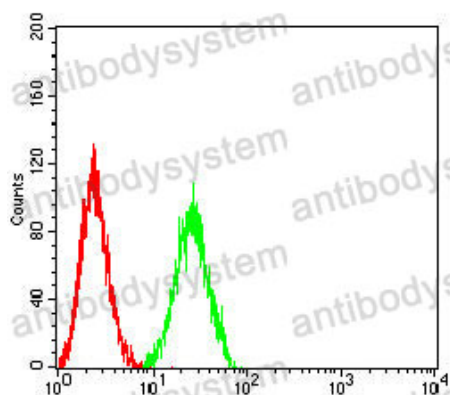
Summary

Catalog No.	RHE47002
Clone ID	R3L48
Host species	Mouse
Tested applications	ELISA: 1:10000, FCM: 1:200-1:400
Species reactivity	Human
Form	Liquid
Storage buffer	0.01M PBS, pH 7.4, 0.05% Sodium Azide.
Concentration	1 mg/ml
Purity	>95% as determined by SDS-PAGE.
Clonality	Monoclonal
Isotype	IgG1
Applications	ELISA, FCM
Target	C-C chemokine receptor type 10, G-protein coupled receptor 2, CCR-10, CC-CKR-10, GPR2, CCR10, C-C CKR-10
Purification	Protein A/G purified from cell culture supernatant.
Endotoxin level	Please contact with the lab for this information.
Accession	P46092
Stability and Storage	Use a manual defrost freezer and avoid repeated freeze-thaw cycles. Store at 4°C short term (1-2 weeks). Store at -20°C 12 months. Store at -80°C long term.

Note

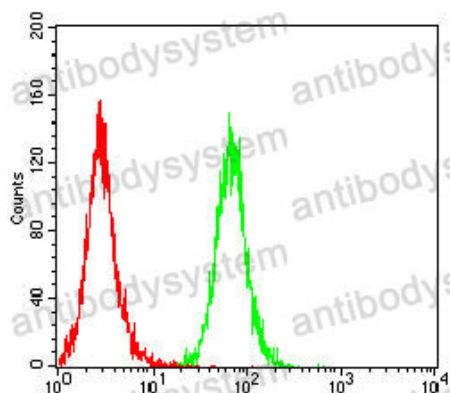
For research use only.

Data Image



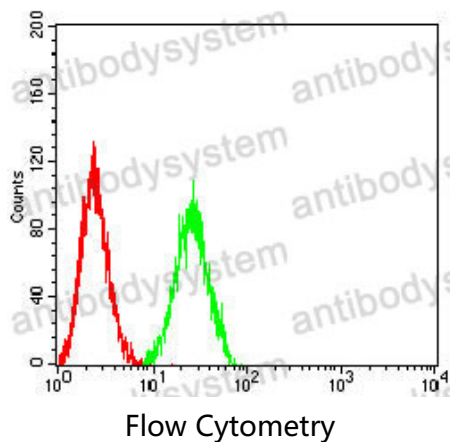
Flow Cytometry

Flow cytometric analysis of HL-60 cells using CCR10 mouse mAb (green) and negative control (red).



Flow Cytometry

Flow cytometric analysis of MOLT4 cells using CCR10 mouse mAb (green) and negative control (red).



Flow cytometric analysis of THP-1 cells using CCR10 mouse mAb (green) and negative control (red).