

Anti-RECQL Antibody (R3L47)

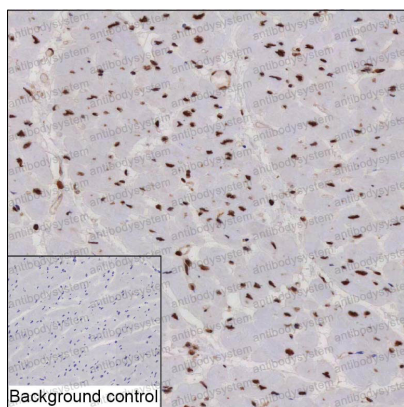
Summary

Catalog No.	RHE46601
Clone ID	R3L47
Host species	Mouse
Tested applications	IHC: 1:20-1:100, IP: 1:100-1:200
Species reactivity	Human
Form	Liquid
Storage buffer	0.01M PBS, pH 7.4, 0.05% Sodium Azide.
Concentration	1 mg/ml
Purity	>95% as determined by SDS-PAGE.
Clonality	Monoclonal
Isotype	IgG1
Applications	IHC, IP
Target	RECQ1, RecQ1, RECQL, DNA-dependent ATPase Q1, ATP-dependent DNA helicase Q1, RecQ protein-like 1, DNA helicase, RecQ-like type 1, RECQL1
Purification	Protein A/G purified from cell culture supernatant.
Endotoxin level	Please contact with the lab for this information.
Accession	P46063
Stability and Storage	Use a manual defrost freezer and avoid repeated freeze-thaw cycles. Store at 4°C short term (1-2 weeks). Store at -20°C 12 months. Store at -80°C long term.

Note

For research use only.

Data Image

**Immunohistochemical**

IHC-P analysis of heart muscle tissue by RECQL antibody (RHE46601). IHC-P was performed using sections of the formalin-fixed paraffin-embedded heart muscle tissue; Result: Myocytes and vascular endothelial cells are positively stained at the nuclei.