

Anti-Ki67/MKI67 Antibody (R3L44)

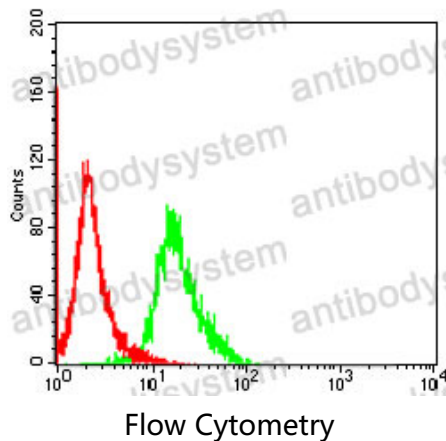
Summary

Catalog No.	RHE46103
Clone ID	R3L44
Host species	Mouse
Tested applications	FCM: 1:200-1:400, IHC: 1:200-1:1000, WB: 1:500-1:2000
Species reactivity	Human, Mouse, Rat, Rabbit, Monkey
Form	Liquid
Storage buffer	0.01M PBS, pH 7.4, 0.05% Sodium Azide.
Concentration	1 mg/ml
Purity	>95% as determined by SDS-PAGE.
Clonality	Monoclonal
Isotype	IgG1
Applications	FCM, IHC, WB
Target	MKI67, Proliferation marker protein Ki-67, Antigen Ki67, Antigen KI-67, Antigen identified by monoclonal antibody Ki-67
Purification	Protein A/G purified from cell culture supernatant.
Endotoxin level	Please contact with the lab for this information.
Accession	P46013
Stability and Storage	Use a manual defrost freezer and avoid repeated freeze-thaw cycles. Store at 4°C short term (1-2 weeks). Store at -20°C 12 months. Store at - 80°C long term.

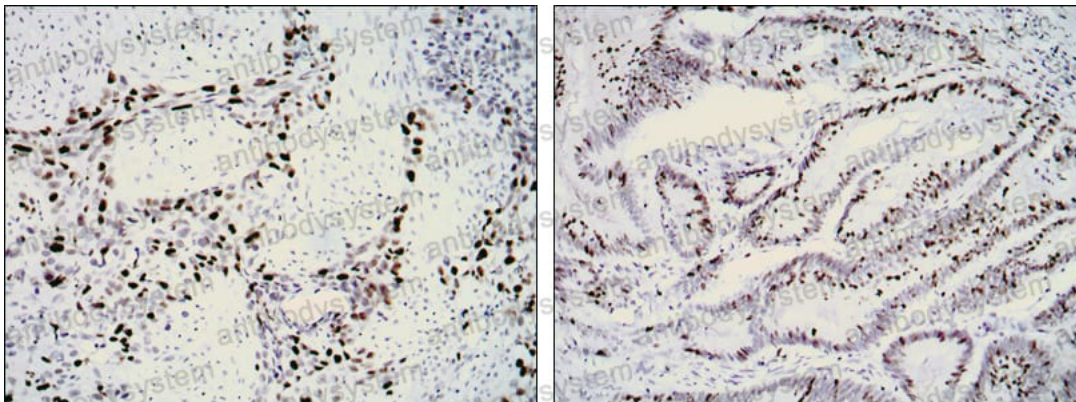
Note

For research use only.

Data Image

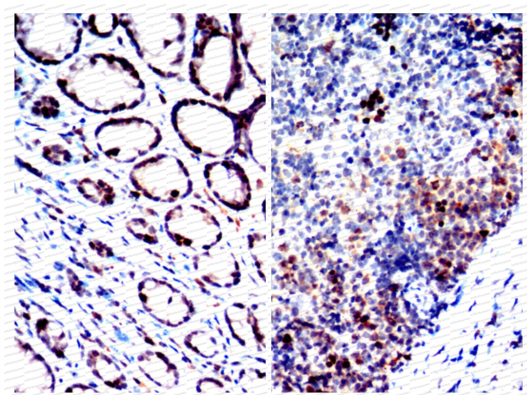


Flow cytometric analysis of NIH/3T3 cells using KI67 mouse mAb (green) and negative control (red).



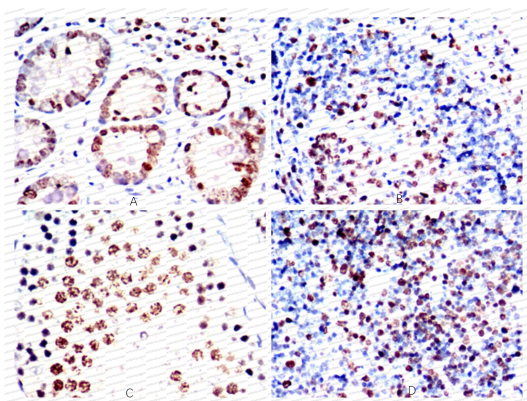
Immunohistochemical analysis of paraffin-embedded human lung cancer (left) and rectal cancer (right) using KI67 mouse mAb with DAB staining.

Immunohistochemical



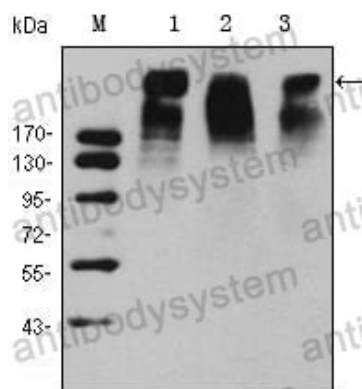
Immunohistochemical

Immunohistochemical analysis of paraffin-embedded Mouse colon(left)Mouse (right) using KI67 mouse mAb with DAB staining.



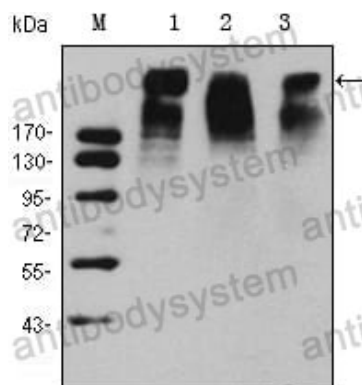
Immunohistochemical

Immunohistochemical analysis of paraffin-embedded Rabbit rectum(A) Rabbit spleen (B) Rabbit testis (C) Rabbit thymus (D) using KI67 mouse mAb with DAB staining.



Western blot

Western blot analysis using KI67 mouse mAb against Hela (1), MCF-7 (2) and Raji (3) cell lysate.



Western blot

Western blot analysis
using KI67 mouse mAb
against Hela (1), MCF-7
(2) and Raji (3) cell
lysate.