

Anti-Ki67/MKI67 Antibody (R3L43)

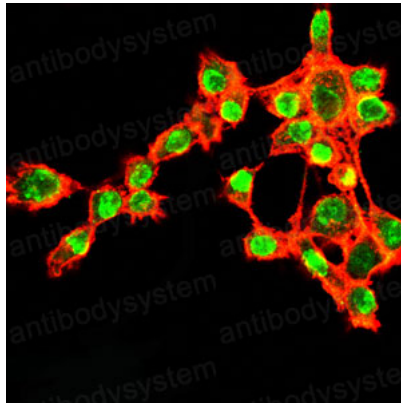
Summary

Catalog No.	RHE46102
Clone ID	R3L43
Host species	Mouse
Tested applications	IF: 1:50-1:500, IHC: 1:100-1:500
Species reactivity	Human, Mouse, Rat, Rabbit, Monkey
Form	Liquid
Storage buffer	0.01M PBS, pH 7.4, 0.05% Sodium Azide.
Concentration	1 mg/ml
Purity	>95% as determined by SDS-PAGE.
Clonality	Monoclonal
Isotype	IgG2b
Applications	IF, IHC
Target	MKI67, Proliferation marker protein Ki-67, Antigen Ki67, Antigen KI-67, Antigen identified by monoclonal antibody Ki-67
Purification	Protein A/G purified from cell culture supernatant.
Endotoxin level	Please contact with the lab for this information.
Accession	P46013
Stability and Storage	Use a manual defrost freezer and avoid repeated freeze-thaw cycles. Store at 4°C short term (1-2 weeks). Store at -20°C 12 months. Store at - 80°C long term.

Note

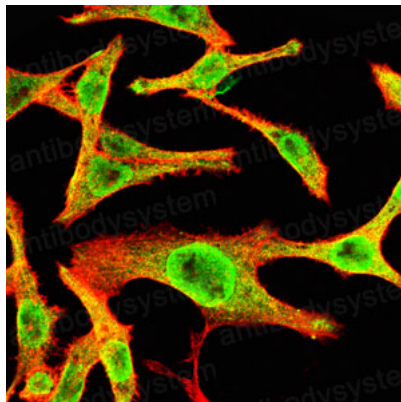
For research use only.

Data Image



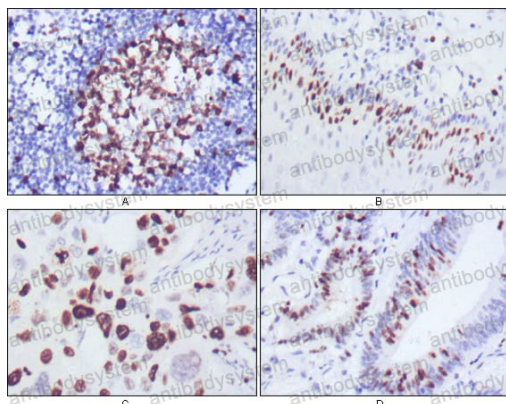
Immunofluorescence

Immunofluorescence analysis of RSC-96 cells using KI67 mouse mAb (green). Blue: DRAQ5 fluorescent DNA dye. Red: Actin filaments have been labeled with Alexa Fluor- 555 phalloidin.



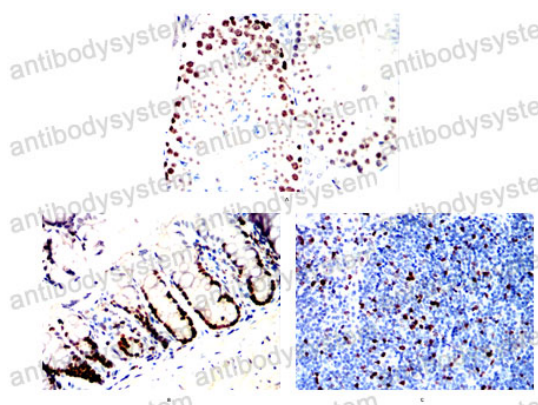
Immunofluorescence

Immunofluorescence analysis of COS7 cells using KI67 mouse mAb (green). Blue: DRAQ5 fluorescent DNA dye. Red: Actin filaments have been labeled with Alexa Fluor- 555 phalloidin.



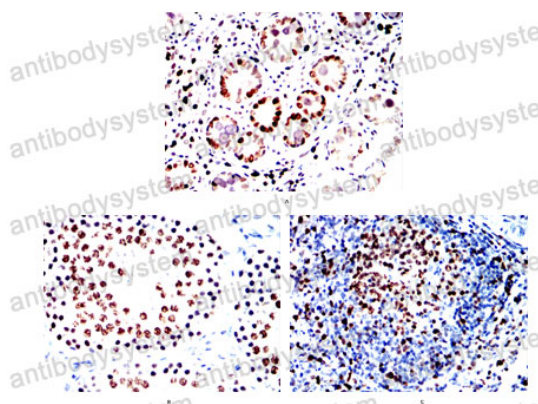
Immunohistochemical

Immunohistochemical analysis of paraffin-embedded human lymph node (A), esophagus (B), lung cancer (C), rectum cancer (D), showing nuclear localization using KI67 mouse mAb with DAB staining.



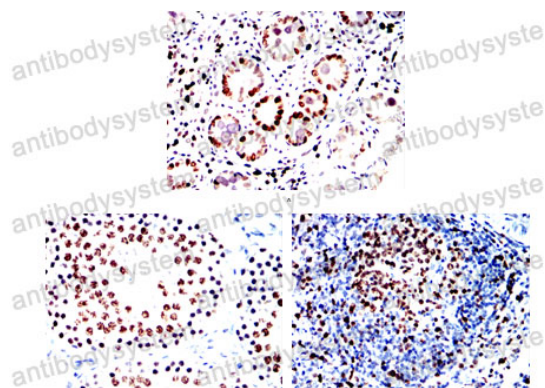
Immunohistochemical

Immunohistochemical analysis of paraffin-embedded Mouse testis(A) Mouse colon(B) Mouse spleen(C) using KI67 mouse mAb with DAB staining.



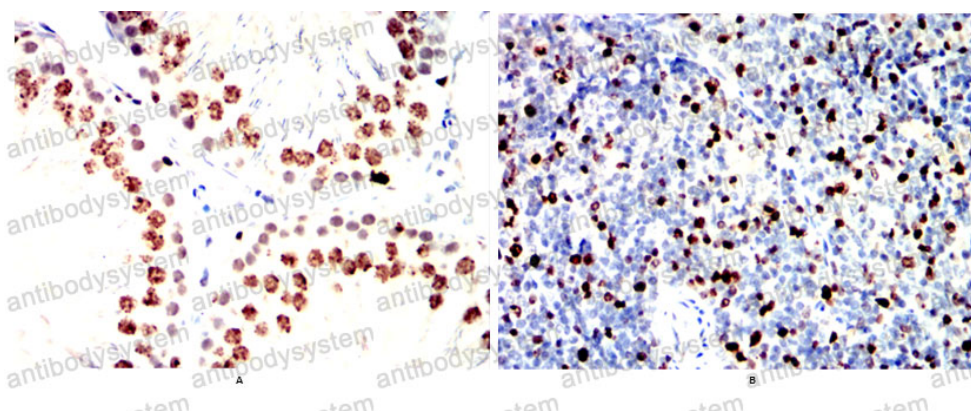
Immunohistochemical

Immunohistochemical analysis of paraffin-embedded Rat brain(A) Rat kidney(B) using KI67 mouse mAb with DAB staining.



Immunohistochemical

Immunohistochemical analysis of paraffin-embedded Rat brain(A)Rat kidney(B) using KI67 mouse mAb with DAB staining.



Immunohistochemical

Immunohistochemical analysis of paraffin-embedded Rabbit brain(A)Rabbit kidney(B) using KI67 mouse mAb with DAB staining.