

# Anti-MAP2K4 Antibody (R3L42)

## Summary

---

<b>Catalog No.</b>	RHE46003
<b>Clone ID</b>	R3L42
<b>Host species</b>	Mouse
<b>Tested applications</b>	ELISA: 1:10000, FCM: 1:200-1:400, IHC: 1:200-1:1000, WB: 1:500-1:2000
<b>Species reactivity</b>	Human
<b>Form</b>	Liquid
<b>Storage buffer</b>	0.01M PBS, pH 7.4, 0.05% Sodium Azide.
<b>Concentration</b>	1 mg/ml
<b>Purity</b>	>95% as determined by SDS-PAGE.
<b>Clonality</b>	Monoclonal
<b>Isotype</b>	IgG1
<b>Applications</b>	ELISA, FCM, IHC, WB
<b>Target</b>	MEK 4, MEK4, SAPK kinase 1, JNKK, c-Jun N-terminal kinase kinase 1, SEK1, JNK-activating kinase 1, MAPK/ERK kinase 4, MAPKK 4, SERK1, SKK1, SAPKK-1, SAPK/ERK kinase 1, PRKMK4, MKK4, MAP kinase kinase 4, MAP2K4, Dual specificity mitogen-activated protein kinase kinase 4, SAPKK1, Stress-activated protein kinase kinase 1, JNKK1
<b>Purification</b>	Protein A/G purified from cell culture supernatant.
<b>Endotoxin level</b>	Please contact with the lab for this information.
<b>Accession</b>	P45985

**Stability and Storage**

Use a manual defrost freezer and avoid repeated freeze-thaw cycles.

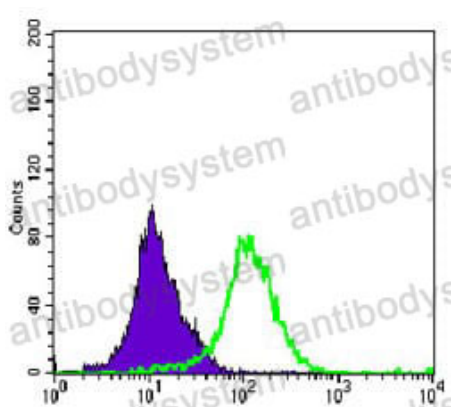
Store at 4°C short term (1-2 weeks). Store at -20°C 12 months. Store at -80°C long term.

**Note**

For research use only.

**Data Image**

---



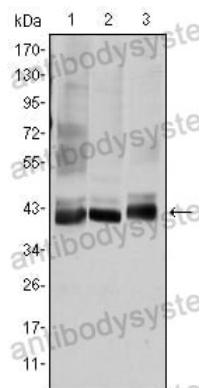
Flow Cytometry

Flow cytometric analysis of K562 cells using MAP2K4 mouse mAb (green) and negative control (purple).



Immunohistochemical

Immunohistochemical analysis of paraffin-embedded human muscle tissues using MAP2K4 mouse mAb with DAB staining.



Western blot

Western blot analysis using MAP2K4 mouse mAb against HepG2 (1), K562 (2), and HEK293 (3) cell lysate.