

Anti-MAP2K4 Antibody (R3L41)

Summary

Catalog No.	RHE46002
Clone ID	R3L41
Host species	Mouse
Tested applications	IHC: 1:200-1:1000
Species reactivity	Human
Form	Liquid
Storage buffer	0.01M PBS, pH 7.4, 0.05% Sodium Azide.
Concentration	1 mg/ml
Purity	>95% as determined by SDS-PAGE.
Clonality	Monoclonal
Isotype	IgM
Applications	IHC
Target	MEK 4, MEK4, SAPK kinase 1, JNKK, c-Jun N-terminal kinase kinase 1, SEK1, JNK-activating kinase 1, MAPK/ERK kinase 4, MAPKK 4, SERK1, SKK1, SAPKK-1, SAPK/ERK kinase 1, PRKMK4, MKK4, MAP kinase kinase 4, MAP2K4, Dual specificity mitogen-activated protein kinase kinase 4, SAPKK1, Stress-activated protein kinase kinase 1, JNKK1
Purification	Protein A/G purified from cell culture supernatant.
Endotoxin level	Please contact with the lab for this information.
Accession	P45985

Stability and Storage

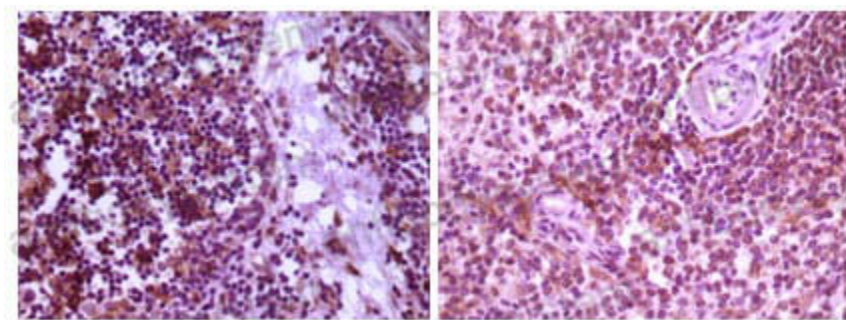
Use a manual defrost freezer and avoid repeated freeze-thaw cycles.

Store at 4°C short term (1-2 weeks). Store at -20°C 12 months. Store at -80°C long term.

Note

For research use only.

Data Image



Immunohistochemical analysis of paraffin-embedded human thymoma tissue (left) and spleen tissue (right), showing cytoplasmic localization using MAP2K4 mouse mAb with DAB staining.

Immunohistochemical