

Anti-MAPK9 Antibody (R3L40)

Summary

Catalog No.	RHE45902
Clone ID	R3L40
Host species	Mouse
Tested applications	ELISA: 1:10000, FCM: 1:200-1:400, WB: 1:500-1:2000
Species reactivity	Human
Form	Liquid
Storage buffer	0.01M PBS, pH 7.4, 0.05% Sodium Azide.
Concentration	1 mg/ml
Purity	>95% as determined by SDS-PAGE.
Clonality	Monoclonal
Isotype	IgG1
Applications	ELISA, FCM, WB
Target	Mitogen-activated protein kinase 9, MAPK 9, Stress-activated protein kinase 1a, SAPK1A, MAP kinase 9, SAPK1a, Stress-activated protein kinase JNK2, PRKM9, JNK-55, MAPK9, JNK2, c-Jun N-terminal kinase 2
Purification	Protein A/G purified from cell culture supernatant.
Endotoxin level	Please contact with the lab for this information.
Accession	P45984

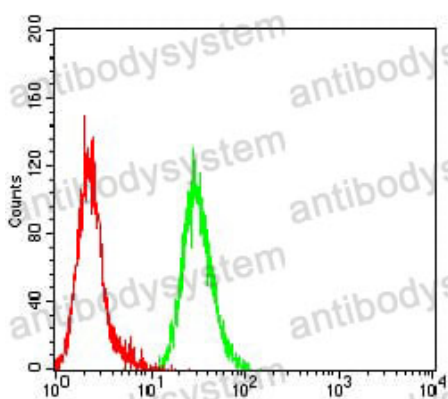
Stability and Storage

Use a manual defrost freezer and avoid repeated freeze-thaw cycles.

Store at 4°C short term (1-2 weeks). Store at -20°C 12 months. Store at -80°C long term.

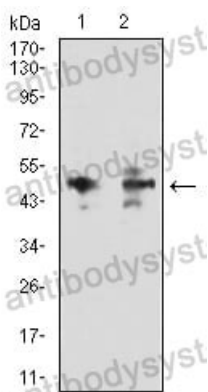
Note

For research use only.

Data Image

Flow Cytometry

Flow cytometric analysis of HeLa cells using MAPK9 mouse mAb (green) and negative control (red).



Western blot

Western blot analysis using MAPK9 mouse mAb against HEK293 (1) and U251 (2) cell lysate.