

Anti-MAPK8 Antibody (R3L39)

Summary

Catalog No.	RHE45808
Clone ID	R3L39
Host species	Mouse
Tested applications	ELISA: 1:10000, FCM: 1:200-1:400, WB: 1:500-1:2000
Species reactivity	Human, Mouse
Form	Liquid
Storage buffer	0.01M PBS, pH 7.4, 0.05% Sodium Azide.
Concentration	1 mg/ml
Purity	>95% as determined by SDS-PAGE.
Clonality	Monoclonal
Isotype	IgG1
Applications	ELISA, FCM, WB
Target	MAP kinase 8, JNK1, SAPK1C, Stress-activated protein kinase 1c, Mitogen-activated protein kinase 8, SAPK1, c-Jun N-terminal kinase 1, SAPK1c, MAPK8, Stress-activated protein kinase JNK1, PRKM8, JNK-46, MAPK 8
Purification	Protein A/G purified from cell culture supernatant.
Endotoxin level	Please contact with the lab for this information.
Accession	P45983

Stability and Storage

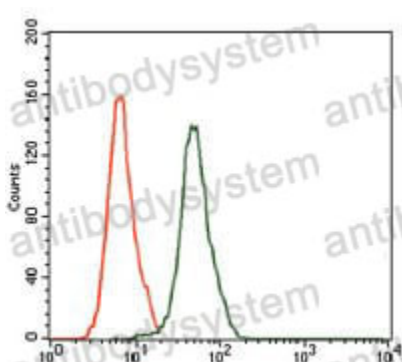
Use a manual defrost freezer and avoid repeated freeze-thaw cycles.

Store at 4°C short term (1-2 weeks). Store at -20°C 12 months. Store at -80°C long term.

Note

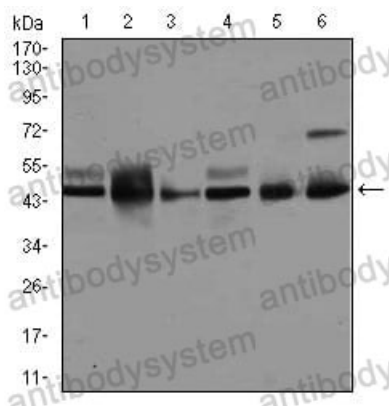
For research use only.

Data Image



Flow Cytometry

Flow cytometric analysis of HeLa cells using MAPK8 mouse mAb (green) and negative control (red).



Western blot

Western blot analysis using MAPK8 mouse mAb against A431 (1), K562 (2), HeLa (3), NIH3T3 (4), PC-12 (5), and MCF-7 (6) cell lysate.