

Anti-CBX5 Antibody (R3L38)

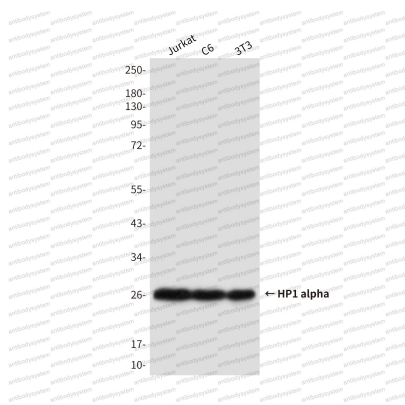
Summary

Catalog No.	RHE45608
Clone ID	R3L38
Host species	Mouse
Tested applications	IF: 1:50-1:200, IHC: 1:50-1:100, WB: 1:500-1:1000
Species reactivity	Human, Mouse, Rat
Form	Liquid
Storage buffer	0.01M PBS, pH 7.4, 0.5% BSA, 0.05% Sodium Azide and 50% Glycerol.
Concentration	1 mg/ml
Purity	>95% as determined by SDS-PAGE.
Clonality	Monoclonal
Isotype	IgG2b
Applications	IF, IHC, WB
Target	Heterochromatin protein 1 homolog alpha, Chromobox protein homolog 5, HP1A, Antigen p25, HP1 alpha, CBX5
Purification	Protein A/G purified from cell culture supernatant.
Endotoxin level	Please contact with the lab for this information.
Accession	P45973
Stability and Storage	Use a manual defrost freezer and avoid repeated freeze-thaw cycles. Store at 4°C short term (1-2 weeks). Store at -20°C 12 months. Store at -80°C long term.

Note

For research use only.

Data Image



Western blot

Western blot analysis of HP1 alpha in Jurkat, C6 and 3T3 lysates using HP1 alpha antibody.