

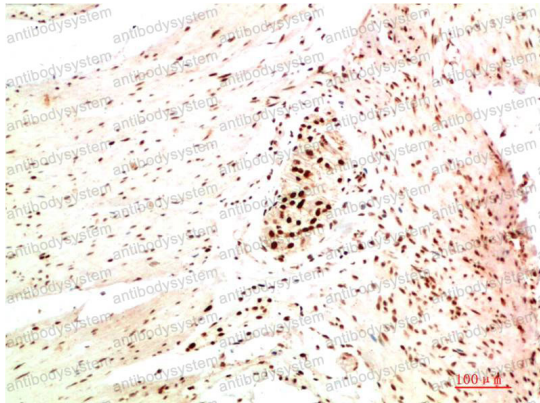
Anti-CBX5 Antibody (R3L37)

Summary

Catalog No.	RHE45607
Clone ID	R3L37
Host species	Mouse
Tested applications	IHC: 1:50-1:100, WB: 1:500-1:1000
Species reactivity	Human, Mouse, Rat
Form	Liquid
Storage buffer	0.01M PBS, pH 7.4, 0.5% BSA, 0.05% Sodium Azide and 50% Glycerol.
Concentration	1 mg/ml
Purity	>95% as determined by SDS-PAGE.
Clonality	Monoclonal
Isotype	IgG1
Applications	IHC, WB
Target	Heterochromatin protein 1 homolog alpha, Chromobox protein homolog 5, HP1A, Antigen p25, HP1 alpha, CBX5
Purification	Protein A/G purified from cell culture supernatant.
Endotoxin level	Please contact with the lab for this information.
Accession	P45973
Stability and Storage	Use a manual defrost freezer and avoid repeated freeze-thaw cycles. Store at 4°C short term (1-2 weeks). Store at -20°C 12 months. Store at -80°C long term.

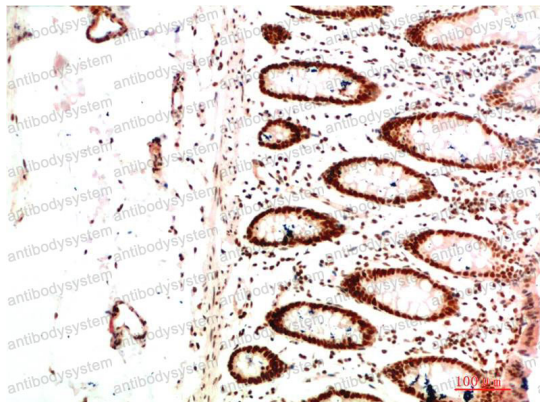
Note For research use only.

Data Image



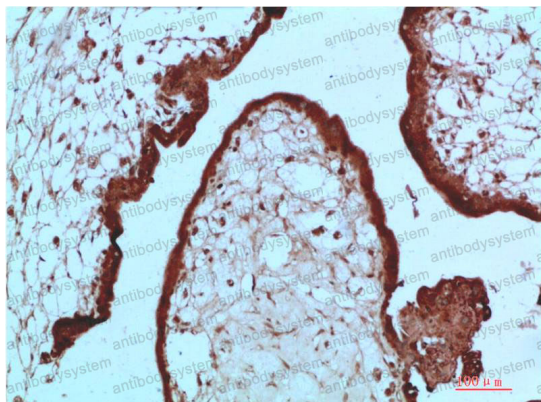
Immunohistochemical

Immunohistochemistry analysis of paraffin-embedded Human Colon Carcinoma Tissue using HP1 alpha antibody. High-pressure and temperature Sodium Citrate pH 6.0 was used for antigen retrieval.



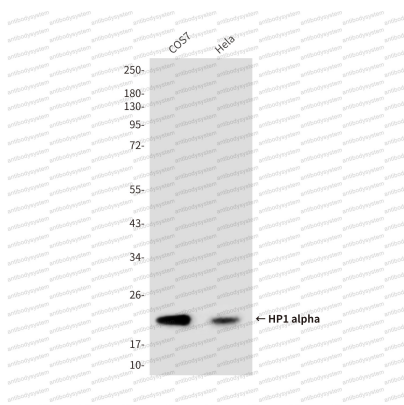
Immunohistochemical

Immunohistochemical analysis of paraffin-embedded Human tonsils using HP1 alpha antibody. High-pressure and temperature Sodium Citrate pH 6.0 was used for antigen retrieval.



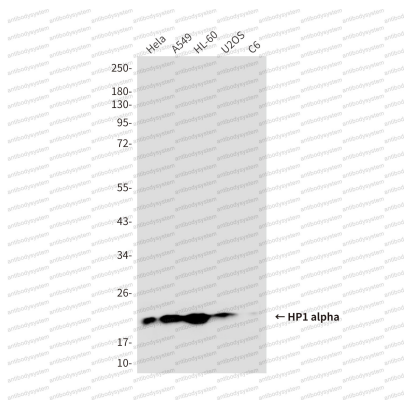
Immunohistochemical

Immunohistochemistry analysis of paraffin-embedded Human Placenta Tissue using HP1 alpha antibody High-pressure and temperature Sodium Citrate pH 6.0 was used for antigen retrieval.



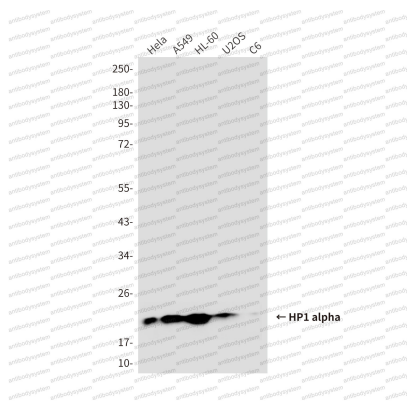
Western blot

Western blot analysis of HP1 alpha in COS7, HeLa lysates using HP1 alpha antibody.



Western blot

Western blot analysis of HP1 α in HeLa, A549, HL-60, U2OS, C6 lysates using HP1 alpha antibody



Western blot

Western blot analysis of HP1 α in HeLa, A549, HL-60, U2OS, C6 lysates using HP1 alpha antibody