

Anti-CD158e/KIR3DL1 Antibody (R3L26)

Summary

Catalog No.	RHE43705
Clone ID	R3L26
Host species	Mouse
Tested applications	ELISA: 1:10000, IHC: 1:200-1:1000, WB: 1:500-1:2000
Species reactivity	Human, Rat, Monkey
Form	Liquid
Storage buffer	0.01M PBS, pH 7.4, 0.05% Sodium Azide.
Concentration	1 mg/ml
Purity	>95% as determined by SDS-PAGE.
Clonality	Monoclonal
Isotype	IgG2b
Applications	ELISA, IHC, WB
Target	HLA-BW4-specific inhibitory NK cell receptor, NKB1, KIR3DL1, p70 NK receptor CL-2/CL-11, CD158E, MHC class I NK cell receptor, Killer cell immunoglobulin-like receptor 3DL1, p70 natural killer cell receptor clones CL-2/CL-11, Natural killer-associated transcript 3, NKAT-3, CD158e, CD158 antigen-like family member E, NKAT3
Purification	Protein A/G purified from cell culture supernatant.
Endotoxin level	Please contact with the lab for this information.
Accession	P43629

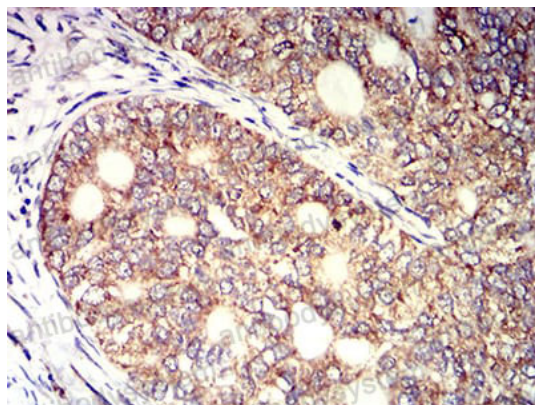
Stability and Storage

Use a manual defrost freezer and avoid repeated freeze-thaw cycles.

Store at 4°C short term (1-2 weeks). Store at -20°C 12 months. Store at -80°C long term.

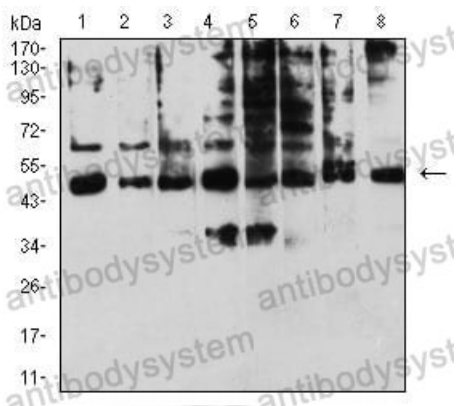
Note

For research use only.

Data Image

Immunohistochemical

Immunohistochemical analysis of paraffin-embedded human cervical cancer tissues using KIR3DL1 mouse mAb with DAB staining.



Western blot

Western blot analysis using KIR3DL1 mouse mAb against A431 (1), Raji (2), SPC-A-1 (3), K562 (4), HEK293 (5), U937 (6), C6 (7), and COS7 (8) cell lysate.