

Anti-CD158e/KIR3DL1 Antibody (R3L25)

Summary

Catalog No.	RHE43704
Clone ID	R3L25
Host species	Mouse
Tested applications	ELISA: 1:10000, FCM: 1:200-1:400, WB: 1:500-1:2000
Species reactivity	Human, Rat
Form	Liquid
Storage buffer	0.01M PBS, pH 7.4, 0.05% Sodium Azide.
Concentration	1 mg/ml
Purity	>95% as determined by SDS-PAGE.
Clonality	Monoclonal
Isotype	IgG2b
Applications	ELISA, FCM, WB
Target	HLA-BW4-specific inhibitory NK cell receptor, NKB1, KIR3DL1, p70 NK receptor CL-2/CL-11, CD158E, MHC class I NK cell receptor, Killer cell immunoglobulin-like receptor 3DL1, p70 natural killer cell receptor clones CL-2/CL-11, Natural killer-associated transcript 3, NKAT-3, CD158e, CD158 antigen-like family member E, NKAT3
Purification	Protein A/G purified from cell culture supernatant.
Endotoxin level	Please contact with the lab for this information.
Accession	P43629

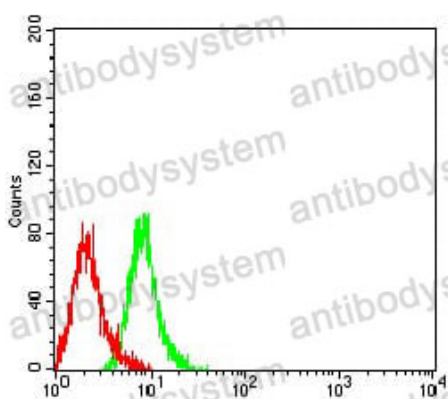
Stability and Storage

Use a manual defrost freezer and avoid repeated freeze-thaw cycles.

Store at 4°C short term (1-2 weeks). Store at -20°C 12 months. Store at -80°C long term.

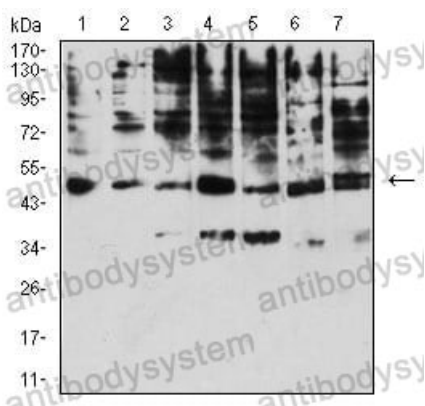
Note

For research use only.

Data Image

Flow Cytometry

Flow cytometric analysis of Jurkat cells using KIR3DL1 mouse mAb (green) and negative control (red).



Western blot

Western blot analysis using KIR3DL1 mouse mAb against A431 (1), Raji (2), SPC-A-1 (3), K562 (4), HEK293 (5), U937 (6), and C6 (7) cell lysate.