

Anti-CD158e/KIR3DL1 Antibody (R3L23)

Summary

Catalog No.	RHE43702
Clone ID	R3L23
Host species	Mouse
Tested applications	ELISA: 1:10000, FCM: 1:200-1:400, IHC: 1:200-1:1000
Species reactivity	Human
Form	Liquid
Storage buffer	0.01M PBS, pH 7.4, 0.05% Sodium Azide.
Concentration	1 mg/ml
Purity	>95% as determined by SDS-PAGE.
Clonality	Monoclonal
Isotype	IgG1
Applications	ELISA, FCM, IHC
Target	HLA-BW4-specific inhibitory NK cell receptor, NKB1, KIR3DL1, p70 NK receptor CL-2/CL-11, CD158E, MHC class I NK cell receptor, Killer cell immunoglobulin-like receptor 3DL1, p70 natural killer cell receptor clones CL-2/CL-11, Natural killer-associated transcript 3, NKAT-3, CD158e, CD158 antigen-like family member E, NKAT3
Purification	Protein A/G purified from cell culture supernatant.
Endotoxin level	Please contact with the lab for this information.
Accession	P43629

Stability and Storage

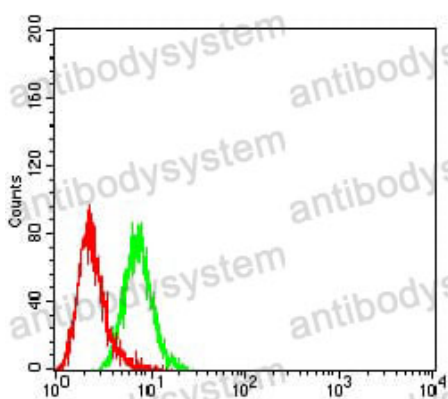
Use a manual defrost freezer and avoid repeated freeze-thaw cycles.

Store at 4°C short term (1-2 weeks). Store at -20°C 12 months. Store at -80°C long term.

Note

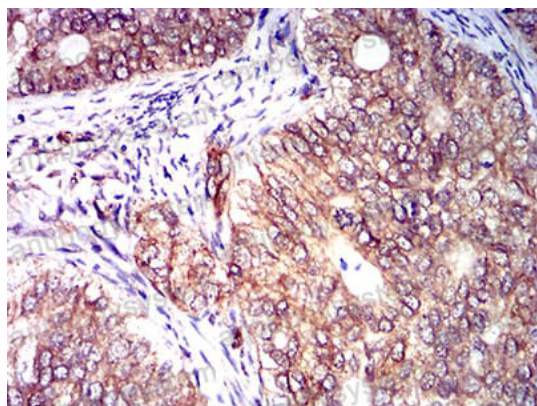
For research use only.

Data Image



Flow Cytometry

Flow cytometric analysis of HL-60 cells using CD158E1 mouse mAb (green) and negative control (red).



Immunohistochemical

Immunohistochemical analysis of paraffin-embedded human cervical cancer tissues using CD158E1 mouse mAb with DAB staining.