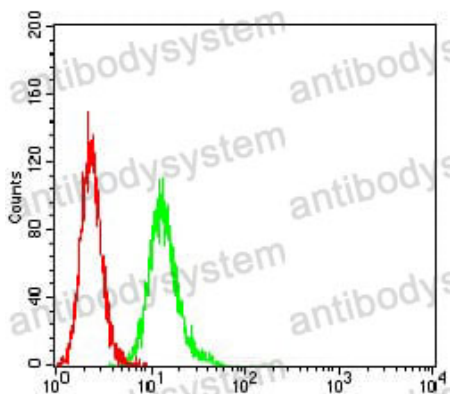


Anti-SYK Antibody (R3L20)

Summary

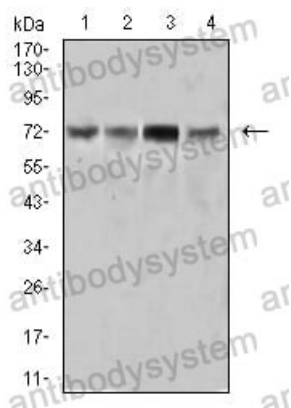
Catalog No.	RHE43004
Clone ID	R3L20
Host species	Mouse
Tested applications	ELISA: 1:10000, FCM: 1:200-1:400, WB: 1:500-1:2000
Species reactivity	Human
Form	Liquid
Storage buffer	0.01M PBS, pH 7.4, 0.05% Sodium Azide.
Concentration	1 mg/ml
Purity	>95% as determined by SDS-PAGE.
Clonality	Monoclonal
Isotype	IgG1
Applications	ELISA, FCM, WB
Target	Spleen tyrosine kinase, SYK, Tyrosine-protein kinase SYK, p72-Syk
Purification	Protein A/G purified from cell culture supernatant.
Endotoxin level	Please contact with the lab for this information.
Accession	P43405
Stability and Storage	Use a manual defrost freezer and avoid repeated freeze-thaw cycles. Store at 4°C short term (1-2 weeks). Store at -20°C 12 months. Store at -80°C long term.
Note	For research use only.

Data Image



Flow Cytometry

Flow cytometric analysis of HeLa cells using SYK mouse mAb (green) and negative control (red).



Western blot

Western blot analysis using SYK mouse mAb against Ramos (1), HEK293 (2), Raji (3), and A431 (4) cell lysate.