

Anti-MAGEA4 Antibody (R3L14)

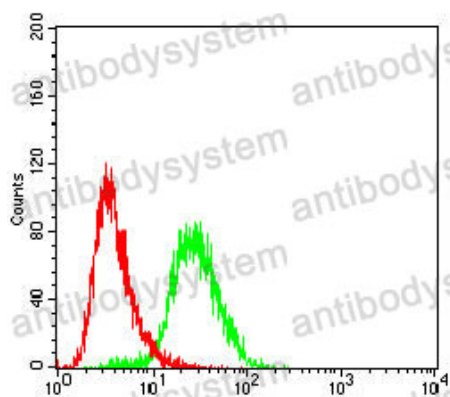
Summary

Catalog No.	RHE41903
Clone ID	R3L14
Host species	Mouse
Tested applications	ELISA: 1:10000, FCM: 1:200-1:400, IHC: 1:200-1:1000, WB: 1:500-1:2000
Species reactivity	Human, Mouse, Rat
Form	Liquid
Storage buffer	0.01M PBS, pH 7.4, 0.05% Sodium Azide.
Concentration	1 mg/ml
Purity	>95% as determined by SDS-PAGE.
Clonality	Monoclonal
Isotype	IgG1
Applications	ELISA, FCM, IHC, WB
Target	Cancer/testis antigen 1.4, MAGEA4, MAGE4, CT1.4, Melanoma-associated antigen 4, MAGE-X2 antigen, MAGE-41 antigen, MAGE-4 antigen
Purification	Protein A/G purified from cell culture supernatant.
Endotoxin level	Please contact with the lab for this information.
Accession	P43358
Stability and Storage	Use a manual defrost freezer and avoid repeated freeze-thaw cycles. Store at 4°C short term (1-2 weeks). Store at -20°C 12 months. Store at -80°C long term.

Note

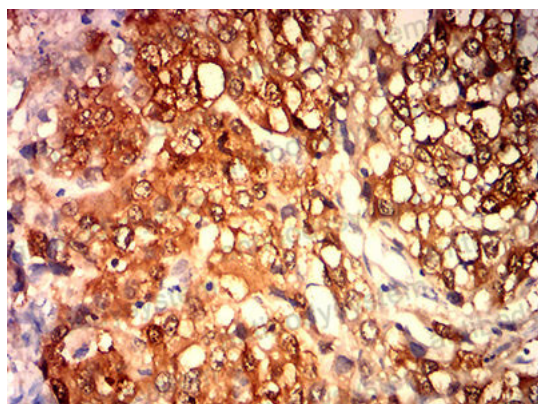
For research use only.

Data Image



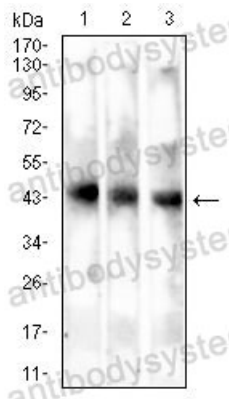
Flow Cytometry

Flow cytometric analysis of K562 cells using MAGEA4 mouse mAb (green) and negative control (red).



Immunohistochemical

Immunohistochemical analysis of paraffin-embedded human liver cancer tissues using MAGEA4 mouse mAb with DAB staining.



Western blot

Western blot analysis using MAGEA4 mouse mAb against Mouse liver (1), Rat liver (2), and Rat kidney (3) cell lysate.