

Anti-MAGEA4 Antibody (R3L13)

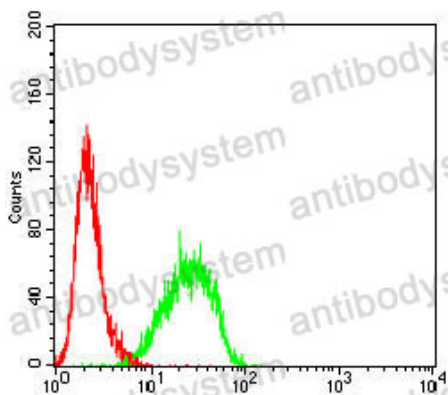
Summary

Catalog No.	RHE41902
Clone ID	R3L13
Host species	Mouse
Tested applications	ELISA: 1:10000, FCM: 1:200-1:400, WB: 1:500-1:2000
Species reactivity	Human, Mouse, Rat
Form	Liquid
Storage buffer	0.01M PBS, pH 7.4, 0.05% Sodium Azide.
Concentration	1 mg/ml
Purity	>95% as determined by SDS-PAGE.
Clonality	Monoclonal
Isotype	IgG1
Applications	ELISA, FCM, WB
Target	Cancer/testis antigen 1.4, MAGEA4, MAGE4, CT1.4, Melanoma-associated antigen 4, MAGE-X2 antigen, MAGE-41 antigen, MAGE-4 antigen
Purification	Protein A/G purified from cell culture supernatant.
Endotoxin level	Please contact with the lab for this information.
Accession	P43358
Stability and Storage	Use a manual defrost freezer and avoid repeated freeze-thaw cycles. Store at 4°C short term (1-2 weeks). Store at -20°C 12 months. Store at -80°C long term.

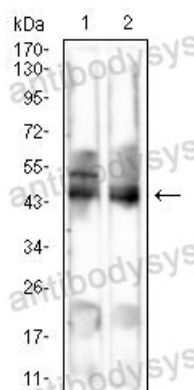
Note

For research use only.

Data Image

**Flow Cytometry**

Flow cytometric analysis of LNCAP cells using MAGEA4 mouse mAb (green) and negative control (red).

**Western blot**

Western blot analysis using MAGEA4 mouse mAb against Mouse liver (1), Rat liver (2) cell lysate.