

# Anti-MSH2 Antibody (R3L08)

## Summary

---

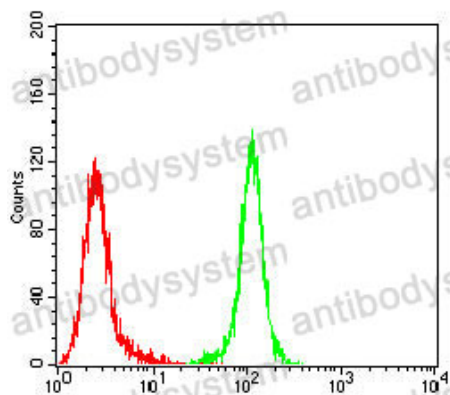
<b>Catalog No.</b>	RHE40508
<b>Clone ID</b>	R3L08
<b>Host species</b>	Mouse
<b>Tested applications</b>	ELISA: 1:10000, FCM: 1:200-1:400, IF: 1:200-1:1000, WB: 1:500-1:2000
<b>Species reactivity</b>	Human, Mouse, Rat, Monkey
<b>Form</b>	Liquid
<b>Storage buffer</b>	0.01M PBS, pH 7.4, 0.05% Sodium Azide.
<b>Concentration</b>	1 mg/ml
<b>Purity</b>	>95% as determined by SDS-PAGE.
<b>Clonality</b>	Monoclonal
<b>Isotype</b>	IgG1
<b>Applications</b>	ELISA, FCM, IF, WB
<b>Target</b>	hMSH2, MutS protein homolog 2, MSH2, DNA mismatch repair protein Msh2
<b>Purification</b>	Protein A/G purified from cell culture supernatant.
<b>Endotoxin level</b>	Please contact with the lab for this information.
<b>Accession</b>	P43246
<b>Stability and Storage</b>	Use a manual defrost freezer and avoid repeated freeze-thaw cycles. Store at 4°C short term (1-2 weeks). Store at -20°C 12 months. Store at -80°C long term.

**Note**

For research use only.

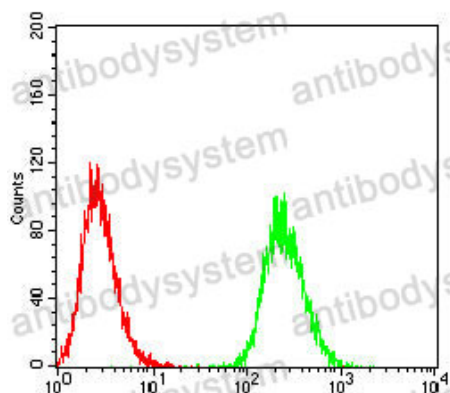
**Data Image**

---



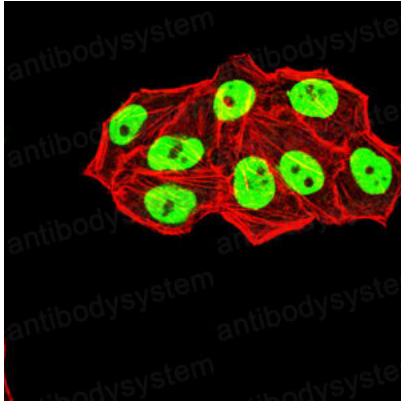
Flow Cytometry

Flow cytometric analysis of HeLa cells using MSH2 mouse mAb (green) and negative control (red).



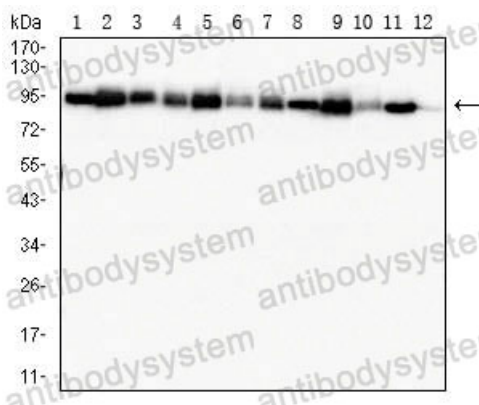
Flow Cytometry

Flow cytometric analysis of HepG2 cells using MSH2 mouse mAb (green) and negative control (red).



Immunofluorescence

Immunofluorescence analysis of \*\*\* cells using \*\*\* mouse mAb (green). Blue: DRAQ5 fluorescent DNA dye. Red: Actin filaments have been labeled with Alexa Fluor- 555 phalloidin.



Western blot

Western blot analysis using MSH2 mouse mAb against Hela (1), K562 (2), A549 (3), A431 (4), MCF-7 (5), DU145 (6), PC-3 (7), Raji (8), SW480 (9), COS-7 (10), NIH/3T3 (11), and PC-12 (12) cell lysate.