

Anti-MSH2 Antibody (R3L03)

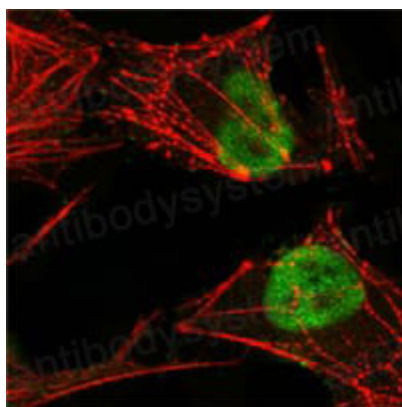
Summary

Catalog No.	RHE40503
Clone ID	R3L03
Host species	Mouse
Tested applications	IF: 1:50-1:500, IHC: 1:100-1:500, WB: 1:500-1:2000
Species reactivity	Human, Mouse
Form	Liquid
Storage buffer	0.01M PBS, pH 7.4, 0.05% Sodium Azide.
Concentration	1 mg/ml
Purity	>95% as determined by SDS-PAGE.
Clonality	Monoclonal
Isotype	IgG1
Applications	IF, IHC, WB
Target	hMSH2, MutS protein homolog 2, MSH2, DNA mismatch repair protein Msh2
Purification	Protein A/G purified from cell culture supernatant.
Endotoxin level	Please contact with the lab for this information.
Accession	P43246
Stability and Storage	Use a manual defrost freezer and avoid repeated freeze-thaw cycles. Store at 4°C short term (1-2 weeks). Store at -20°C 12 months. Store at -80°C long term.

Note

For research use only.

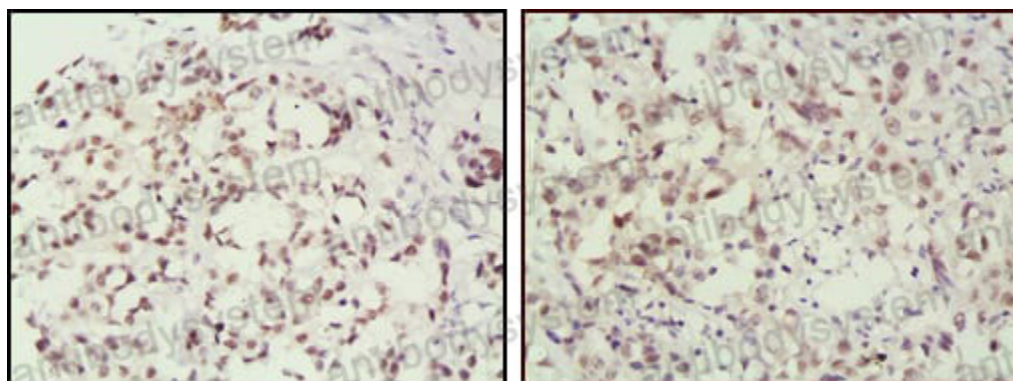
Data Image



Immunofluorescence

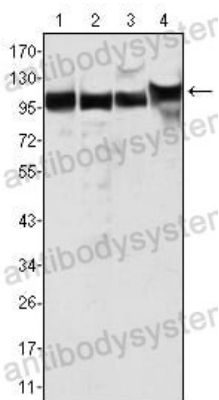
Confocal

Immunofluorescence analysis of HeLa cells using MSH2 mouse mAb (green), showing nuclear localization. Red: Actin filaments have been labeled with Alexa Fluor-555 phalloidin.



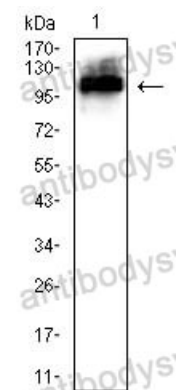
Immunohistochemical

Immunohistochemical analysis of paraffin-embedded human breast cancer (left) and lung cancer (right) tissues, showing nuclear localization using MSH2 mouse mAb with DAB staining.



Western blot

Western blot analysis using MSH2 mouse mAb against HeLa (1), A549 (2), A431 (3) and HEK293 (4) cell lysate.



Western blot

Western blot analysis using
MSH2 mouse mAb against
C2C12 cell lysate.